

# HQ-005 接插体 CONNECTOR

额定电流 Rated current: 16 A 额定电压 Rated voltage: 400 V

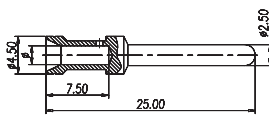
接线方式: 冷压接 Termination methods: Crimp terminal (冷压针请单独订购 Order crimp contacts separately)	型号 Type	订货号 Part No.		尺寸图 Drawing (mm)
		公接插针 Male insert	母接插针 Female insert	
 <p>M F</p> <p>适配 H3A 外壳, 详见 7.12.3 页 Suitable for H3A housing, see page 7.12.3</p>	HQ-005-M	1120053001		
	HQ-005-F		1120053101	

## 16A 插针 Contacts

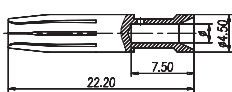
### 技术参数 Technical data

材质: 铜镀银 / 金  
Material: Copper, hard silver / gold plated  
接触电阻 Contact resistance:  $\leq 1\text{m}\Omega$   
接线形式: 冷压接线  
Termination methods: Crimp connection

16A 公插针 Male



16A 母插针 Female



CEM



DEM



CEF



DEF



线径 (mm) Wire gauge	接线长度 Stripping length	镀银冷压针 Crimp contacts, silver-plated		镀金冷压针 Crimp contacts, gold-plated		
		型号 Type	订货号 Part No.	型号 Type	订货号 Part No.	
0.14-0.37	AWG26-22	7.5mm	CEM-0.37	3330006127	DEM-0.37	3330006117
0.5	AWG20	7.5mm	CEM-0.5	3330006121	DEM-0.5	3330006122
0.75	AWG18	7.5mm	CEM-0.75	3330006114	DEM-0.75	3330006115
1.0	AWG18	7.5mm	CEM-1.0	3330006105	DEM-1.0	3330006118
1.5	AWG16	7.5mm	CEM-1.5	3330006104	DEM-1.5	3330006116
2.5	AWG14	7.5mm	CEM-2.5	3330006102	DEM-2.5	3330006123
4.0	AWG12	7.5mm	CEM-4.0	3330006107	DEM-4.0	3330006119

线径 (mm) Wire gauge	接线长度 Stripping length	镀银冷压针 Crimp contacts, silver-plated		镀金冷压针 Crimp contacts, gold-plated		
		型号 Type	订货号 Part No.	型号 Type	订货号 Part No.	
0.14-0.37	AWG26-22	7.5mm	CEF-0.37	3330006227	DEF-0.37	3330006217
0.5	AWG20	7.5mm	CEF-0.5	3330006221	DEF-0.5	3330006222
0.75	AWG18	7.5mm	CEF-0.75	3330006214	DEF-0.75	3330006215
1.0	AWG18	7.5mm	CEF-1.0	3330006205	DEF-1.0	3330006218
1.5	AWG16	7.5mm	CEF-1.5	3330006204	DEF-1.5	3330006216
2.5	AWG14	7.5mm	CEF-2.5	3330006202	DEF-2.5	3330006223
4.0	AWG12	7.5mm	CEF-4.0	3330006207	DEF-4.0	3330006219

## 技术参数 Technical characteristics

### 1 插芯 Inserts

接插件针数 Number of contacts	5+PE
按照 DIN EN 61984 的电气数据 Electrical data	
- 额定电流 Rated current	16A
- 相对地额定电压 Rated voltage conductor-ground	230V
- 相间额定电压 Rated voltage conductor-conductor	400V
- 额定脉冲电压 Rated impulse voltage	4kV
- 污染程度 Pollution degree	3
- 当污染程度 2 时的参数 Pollution degree 2 also	16A 230/500V 4kV 2
依据 UL/CSA 额定电压 Rated voltage	600V
绝缘电阻 Insulation resistance	$\geq 10^{10}\Omega$
材料 Material	聚碳酸酯 Polycarbonate
工作温度范围 Limiting temperatures	-40°C ... +125°C
依据 UL94 的阻燃等级 Flammability	V0
可拔插次数 Mating cycles	$\geq 500$

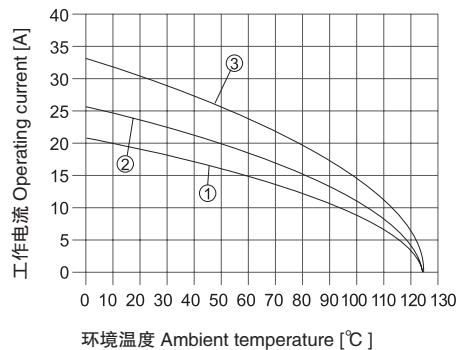
### 2 插针 Contacts

材料 Material	铜合金 Copper alloy
表面处理 Surface	镀银 Hard-silver plated 镀金 Hard-gold plated
接触电阻 Contact resistance	$\leq 1\text{m}\Omega$
冷压连接 Crimp terminal	
-mm <sup>2</sup>	0.5-4.0mm <sup>2</sup>
-AWG	26-14

### 电流负载能力 Current carrying capacity

电流负载能力所受的限制主要来自包含接插针的接插体可承受的最大温度测试和控制过程依据 DIN EN 60512-5

Current load capacity, mainly from the restrictions include plug the plug of the needle body can withstand maximum temperature Testing and control process according to DIN EN 60512-5


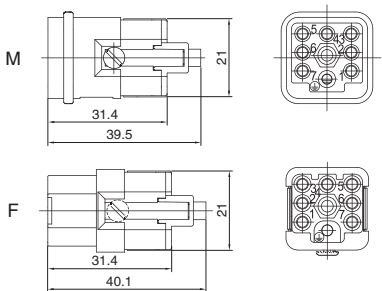

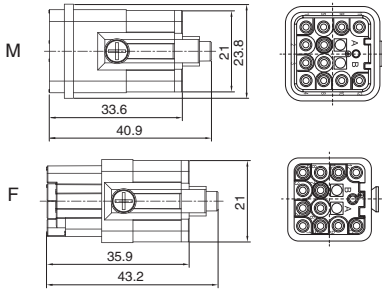


- ① 导线截面 Wire gauge: 1.0 mm<sup>2</sup>
- ② 导线截面 Wire gauge: 1.5 mm<sup>2</sup>
- ③ 导线截面 Wire gauge: 2.5 mm<sup>2</sup>

# HQ-007、HQ-012 接插体 CONNECTOR



额定电流 Rated current: 10 A 额定电压 Rated voltage: 400 V

	型号 Type	订货号 Part No.		尺寸图 Drawing (mm)
		公接插针 Male insert	母接插针 Female insert	
接线方式: 冷压接 Termination methods: Crimp terminal (冷压针请单独订购 Order crimp contacts separately)  适配 H3A 外壳, 详见 7.12.3 页 Suitable for H3A housing, see page 7.12.3	HQ-007-M	1120073001		
	HQ-007-F		1120073101	
接线方式: 冷压接 Termination methods: Crimp terminal (冷压针请单独订购 Order crimp contacts separately)  适配 H3A 外壳, 详见 7.12.3 页 Suitable for H3A housing, see page 7.12.3	HQ-012-M	1120123001		
	HQ-012-F		1120123101	

## 10A 插针 Contacts

### 技术参数 Technical data

材质: 铜镀银 / 金  
 Material: Copper, hard silver / gold plated  
 接触电阻 Contact resistance:  $\leq 3m\Omega$   
 接线形式: 冷压接线  
 Termination methods: Crimp connection

CDM



DDM



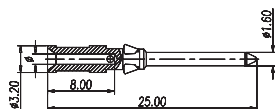
CDF



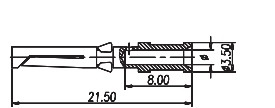
DDF



10A 公插针 Male



10A 母插针 Female



线径 (mm <sup>2</sup> ) Wire gauge	接线长度 Stripping length	镀银冷压针 Crimp contacts, silver-plated		镀金冷压针 Crimp contacts, gold-plated		
		型号 Type	订货号 Part No.	型号 Type	订货号 Part No.	
0.14-0.37	AWG26-22	8.0mm	CDM-0.37	3150006104	DDM-0.37	3150006124
0.5	AWG20	8.0mm	CDM-0.5	3150006103	DDM-0.5	3150006123
0.75	AWG18	8.0mm	CDM-0.75	3150006105	DDM-0.75	3150006125
1.0	AWG18	8.0mm	CDM-1.0	3150006102	DDM-1.0	3150006122
1.5	AWG16	8.0mm	CDM-1.5	3150006101	DDM-1.5	3150006121
2.5	AWG14	8.0mm	CDM-2.5	3150006106	DDM-2.5	3150006126

线径 (mm <sup>2</sup> ) Wire gauge	接线长度 Stripping length	镀银冷压针 Crimp contacts, silver-plated		镀金冷压针 Crimp contacts, gold-plated		
		型号 Type	订货号 Part No.	型号 Type	订货号 Part No.	
0.14-0.37	AWG26-22	8.0mm	CDF-0.37	3150006204	DDF-0.37	3150006224
0.5	AWG20	8.0mm	CDF-0.5	3150006203	DDF-0.5	3150006223
0.75	AWG18	8.0mm	CDF-0.75	3150006205	DDF-0.75	3150006225
1.0	AWG18	8.0mm	CDF-1.0	3150006202	DDF-1.0	3150006222
1.5	AWG16	8.0mm	CDF-1.5	3150006201	DDF-1.5	3150006221
2.5	AWG14	8.0mm	CDF-2.5	3150006206	DDF-2.5	3150006226

## 技术参数 Technical characteristics

### 1 插芯 Inserts

接插件针数 Number of contacts	7+PE
按照 DIN EN 61984 的电气数据 Electrical data	
- 额定电流 Rated current	10A
- 额定电压 Rated voltage	400V
- 额定脉冲电压 Rated impulse voltage	6kV
- 污染程度 Pollution degree	3
- 当污染程度 2 时的参数 Pollution degree 2 also	10A 400/690V 6kV 2
依据 UL/CSA 额定电压 Rated voltage	600V
绝缘电阻 Insulation resistance	$\geq 10^{10}\Omega$
材料 Material	聚碳酸酯 Polycarbonate
工作温度范围 Limiting temperatures	-40℃ ... +125℃
依据 UL94 的阻燃等级 Flammability	V0
可拔插次数 Mating cycles	$\geq 500$

### 2 插针 Contacts

材料 Material	铜合金 Copper alloy
表面处理 Surface	镀银 Hard-silver plated
	镀金 Hard-gold plated
接触电阻 Contact resistance	$\leq 3m\Omega$
冷压连接 Crimp terminal	
-mm <sup>2</sup>	0.5-2.5mm <sup>2</sup>
-AWG	26-14

# HQ-008 接插体 CONNECTOR

额定电流 Rated current: 16 A 额定电压 Rated voltage: 500 V

接线方式: 冷压接 Termination methods: Crimp terminal (冷压针请单独订购 Order crimp contacts separately)	型号 Type	订货号 Part No.		尺寸图 Drawing (mm)
		公接插针 Male insert	母接插针 Female insert	
 M F 适配 H8A 外壳, 详见 7.14.1 页 Suitable for H8A housing, see page 7.14.1	HQ-008-M	1120083001		
	HQ-008-F	1120083101		

## 16A 插针 Contacts

技术参数 Technical data

材质: 铜镀银 / 金

Material: Copper, hard silver / gold plated

接触电阻 Contact resistance:  $\leq 1\text{m}\Omega$

接线形式: 冷压接线

Termination methods: Crimp connection

CEM



DEM



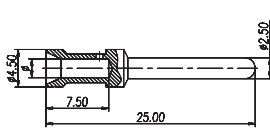
CEF



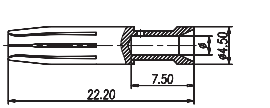
DEF



16A 公插针 Male



16A 母插针 Female



线径 (mm) Wire gauge	接线长度 Stripping length		镀银冷压针 Crimp contacts, silver-plated		镀金冷压针 Crimp contacts, gold-plated	
	AWG	mm	型号 Type	订货号 Part No.	型号 Type	订货号 Part No.
0.14-0.37	AWG26-22	7.5mm	CEM-0.37	3330006127	DEM-0.37	3330006117
0.5	AWG20	7.5mm	CEM-0.5	3330006121	DEM-0.5	3330006122
0.75	AWG18	7.5mm	CEM-0.75	3330006114	DEM-0.75	3330006115
1.0	AWG18	7.5mm	CEM-1.0	3330006105	DEM-1.0	3330006118
1.5	AWG16	7.5mm	CEM-1.5	3330006104	DEM-1.5	3330006116
2.5	AWG14	7.5mm	CEM-2.5	3330006102	DEM-2.5	3330006123
4.0	AWG12	7.5mm	CEM-4.0	3330006107	DEM-4.0	3330006119

线径 (mm) Wire gauge	接线长度 Stripping length		镀银冷压针 Crimp contacts, silver-plated		镀金冷压针 Crimp contacts, gold-plated	
	AWG	mm	型号 Type	订货号 Part No.	型号 Type	订货号 Part No.
0.14-0.37	AWG26-22	7.5mm	CEF-0.37	3330006227	DEF-0.37	3330006217
0.5	AWG20	7.5mm	CEF-0.5	3330006221	DEF-0.5	3330006222
0.75	AWG18	7.5mm	CEF-0.75	3330006214	DEF-0.75	3330006215
1.0	AWG18	7.5mm	CEF-1.0	3330006205	DEF-1.0	3330006218
1.5	AWG16	7.5mm	CEF-1.5	3330006204	DEF-1.5	3330006216
2.5	AWG14	7.5mm	CEF-2.5	3330006202	DEF-2.5	3330006223
4.0	AWG12	7.5mm	CEF-4.0	3330006207	DEF-4.0	3330006219

## 技术参数 Technical characteristics

### 1 插芯 Inserts

接插件针数 Number of contacts	8+PE
按照 DIN EN 61984 的电气数据 Electrical data	
- 额定电流 Rated current	16A
- 额定电压 Rated voltage	500V
- 额定脉冲电压 Rated impulse voltage	6kV
- 污染程度 Pollution degree	3
- 当污染程度 2 时的参数 Pollution degree 2 also	16A 400/690V 6kV 2
- 安装金属外壳时 Mounted metal hood	16A 230/400V 4kV 3
依据 UL/CSA 额定电压 Rated voltage	600V
绝缘电阻 Insulation resistance	$\geq 10^{10}\Omega$
材料 Material	聚碳酸酯 Polycarbonate
工作温度范围 Limiting temperatures	-40°C ... +125°C
依据 UL94 的阻燃等级 Flammability	V0
可拔插次数 Mating cycles	$\geq 500$

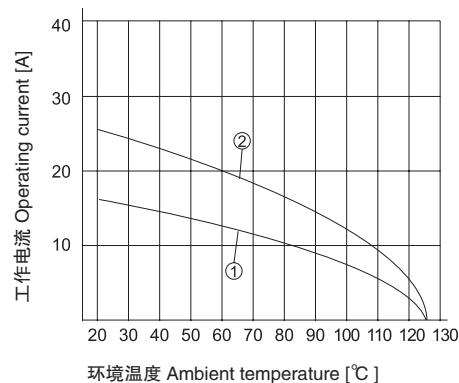
### 2 插针 Contacts

材料 Material	铜合金 Copper alloy
表面处理 Surface	镀银 Hard-silver plated
	镀金 Hard-gold plated
接触电阻 Contact resistance	$\leq 1\text{m}\Omega$
冷压连接 Crimp terminal	
- mm <sup>2</sup>	0.5-4.0mm <sup>2</sup> (部分装备情况可达到 4mm <sup>2</sup> )
- AWG	26-12

### 电流负载能力 Current carrying capacity

电流负载能力所受的限制主要来自包含接插针的接插体可承受的最大温度测试和控制过程依据 DIN EN 60512-5

Current load capacity, mainly from the restrictions include plug the plug of the needle body can withstand maximum temperature Testing and control process according to DIN EN 60512-5



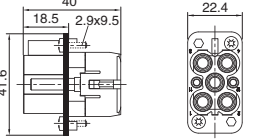
① 导线截面 Wire gauge: 1.5 mm<sup>2</sup>

② 导线截面 Wire gauge: 2.5 mm<sup>2</sup>

# HQ-4/2 接插体 CONNECTOR



额定电流 Rated current: 40A / 10A    额定电压 Rated voltage: 400V / 250V

接线方式: 冷压接 Termination methods: Crimp terminal (冷压针请单独订购 Order crimp contacts separately)	型号 Type	订货号 Part No.		尺寸图 Drawing (mm)	
		公接插针 Male insert	母接插针 Female insert		
 <p>M                      F</p> <p>适配 H8A 外壳, 详见 7.14.1 页 Suitable for H8A housing, see page 7.14.1</p>	HQ-4/2-M	1120063041		M	
	HQ-4/2-F		1120063141	F	

## 10A 镀银冷压针 Crimp contacts, silver-plated

技术参数 Technical data

材质: 铜镀银 / 金

Material: Copper, hard silver / gold plated

接触电阻 Contact resistance:  $\leq 3m\Omega$

接线形式: 冷压接线

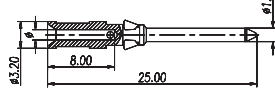
Termination methods: Crimp connection

CDM

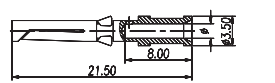
CDF



10A 公插针 Male



10A 母插针 Female



线径 (mm <sup>2</sup> ) Wire gauge	接线长度 Stripping length	公接插针 Male insert 型号 Type	公接插针 Male insert 订货号 Part No.	母接插针 Female insert 型号 Type	母接插针 Female insert 订货号 Part No.	
0.14-0.37	AWG26-22	8.0mm	CDM-0.37	3150006104	CDF-0.37	3150006204
0.5	AWG20	8.0mm	CDM-0.5	3150006103	CDF-0.5	3150006203
0.75	AWG18	8.0mm	CDM-0.75	3150006105	CDF-0.75	3150006205
1.0	AWG18	8.0mm	CDM-1.0	3150006102	CDF-1.0	3150006202
1.5	AWG16	8.0mm	CDM-1.5	3150006101	CDF-1.5	3150006201
2.5	AWG14	8.0mm	CDM-2.5	3150006106	CDF-2.5	3150006206

## 40A 插针 Contacts

技术参数 Technical data

材质: 铜镀银 / 金

Material: Copper, hard silver / gold plated

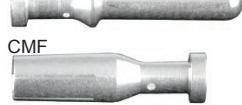
接触电阻 Contact resistance:  $\leq 4m\Omega$

接线形式: 冷压接线

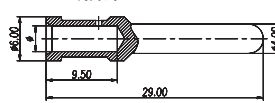
Termination methods: Crimp connection

CMM

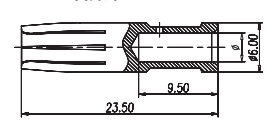
CMF



40A 公插针 Male



40A 母插针 Female



线径 (mm <sup>2</sup> ) Wire gauge	接线长度 (mm) Stripping length	镀银冷压针 Crimp contacts, silver-plated 型号 Type	镀银冷压针 Crimp contacts, silver-plated 订货号 Part No.	
1.5	AWG16	8.0mm	CMM-1.5	3320006104
2.5	AWG14	8.0mm	CMM-2.5	3320006105
4.0	AWG12	8.0mm	CMM-4.0	3320006107
6.0	AWG10	8.0mm	CMM-6.0	3320006108
10.0	AWG7	8.0mm	CMM-10	3320006109

线径 (mm <sup>2</sup> ) Wire gauge	接线长度 (mm) Stripping length	镀银冷压针 Crimp contacts, silver-plated 型号 Type	镀银冷压针 Crimp contacts, silver-plated 订货号 Part No.	
1.5	AWG16	8.0mm	CMF-1.5	3320006204
2.5	AWG14	8.0mm	CMF-2.5	3320006205
4.0	AWG12	8.0mm	CMF-4.0	3320006207
6.0	AWG10	8.0mm	CMF-6.0	3320006208
10.0	AWG7	8.0mm	CMF-10	3320006209

## 技术参数 Technical characteristics

### 1 插芯 Inserts

接插件针数 Number of contacts	4/2+PE
按照 DIN EN 61984 的电气数据 Electrical data	
电力区 Power side	
- 额定电流 Rated current	40A
- 相对地额定电压 Rated voltage conductor-ground	400V
- 相间额定电压 Rated voltage conductor-conductor	690V
- 额定脉冲电压 Rated impulse voltage	6kV
- 污染程度 Pollution degree	3
信号区 Signal side	
- 额定电流 Rated current	10A
- 额定电压 Rated voltage	250V
- 额定脉冲电压 Rated impulse voltage	4kV
- 污染程度 Pollution degree	3
依据 UL/CSA 额定电压 Rated voltage	600/250V
绝缘电阻 Insulation resistance	$\geq 10^{10}\Omega$
材料 Material	聚碳酸酯 Polycarbonate
工作温度范围 Limiting temperatures	-40°C ...+125°C
依据 UL94 的阻燃等级 Flammability	V0
可拔插次数 Mating cycles	$\geq 500$

### 2 插针 Contacts

材料 Material	铜合金 Copper alloy
表面处理 Surface	镀银 Hard-silver plated
	镀金 Hard-gold plated
接触电阻 Contact resistance	$\leq 0.3m\Omega$
冷压连接 Crimp terminal	
-mm <sup>2</sup>	1.5-6mm <sup>2</sup> / 0.14-2.5mm <sup>2</sup>
-AWG	16-10 / 26-14
最大绝缘直径 Max. insulation diameter	
- 强电针 Power contacts	5mm