
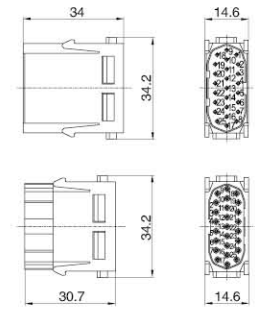


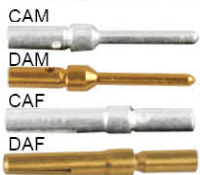
HM-025 模块连接器 MODULAR CONNECTORS

额定电流 Rated current: 5 A 额定电压 Rated voltage: 50 V

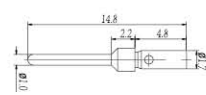
接线方式: 冷压针压接 Termination methods: Crimp terminal (冷压针请单独订购 Order crimp contacts separately)	型号 Type	订货号 Part No.		尺寸图 Drawing (mm)
		公接插针 Male insert	母接插针 Female insert	
 M F	HM-025-M	5140253001		
	HM-025-F		5140253101	

5A 插针 Contacts

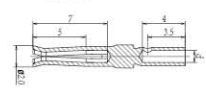
技术参数 Technical data
 材质: 铜镀银 / 金
 Material: Copper, hard silver / gold plated
 接触电阻 Contact resistance: $\leq 4\text{m}\Omega$
 接线形式: 冷压接线
 Termination methods: Crimp connection



5A 公插针 Male



5A 母插针 Female



线径 (mm ²) Wire gauge	AWG	接线长度 Stripping length	镀银冷压针 Crimp contacts, silver-plated 型号 Type	订货号 Part No.	镀金冷压针 Crimp contacts, gold-plated 型号 Type	订货号 Part No.
0.13-0.33mm ²	26-22	5.0mm	CAM-13	3670005566	DAM-13	3670005576
0.33-0.52mm ²	22-20	5.0mm	CAM-33	3670008566	DAM-33	3670008576

线径 (mm ²) Wire gauge	AWG	接线长度 Stripping length	镀银冷压针 Crimp contacts, silver-plated 型号 Type	订货号 Part No.	镀金冷压针 Crimp contacts, gold-plated 型号 Type	订货号 Part No.
0.13-0.33mm ²	26-22	5.0mm	CAF-13	3670005466	DAF-13	3670005476
0.33-0.52mm ²	22-20	5.0mm	CAF-33	3670008466	DAF-33	3670008476

技术参数 Technical characteristics

1 插芯 Inserts

接插针数 Inserts Number of contacts	25
依据 DIN EN 61984 的电气数据 Electrical data	
- 额定电流 Rated current	4A
- 额定电压 Rated voltage	50V
- 额定脉冲电压 Rated impulse voltage	0.8kV
- 污染程度 Pollution degree	3
绝缘电阻 Insulation resistance	$\geq 10^{10}\Omega$
材料 Material	聚碳酸酯 Polycarbonate
工作温度范围 Limiting temperatures	-40°C ... +125°C
依据 UL94 阻燃等级 Flammability	V0
可拔插次数 Mating cycles	≥ 500

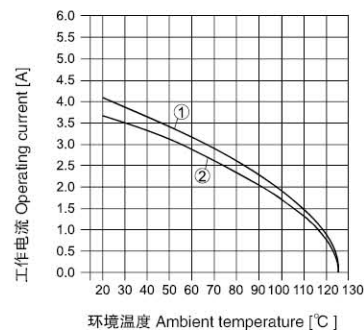
2 插针 Contacts

材料 Material	铜合金 Copper alloy
表面处理 Surface	镀银 Hard-silver plated 镀金 Hard-gold plated
接触电阻 Contact resistance	$\leq 3\text{m}\Omega$
冷压连接 Crimp terminal	
- mm ²	0.13-0.52 mm ²
- AWG	28-20

电流负载能力 Current carrying capacity

电流负载能力所受的限制主要来自包含接插针的接插体可承受的最大温度测试和控制过程依据 DIN EN 60512-5

Current load capacity, mainly from the restrictions include plug the plug of the needle body can withstand maximum temperature Testing and control process according to DIN EN 60512-5



- ① 24B 外壳 带 6 个模块, 导线截面 Wire gauge: 0.5 mm² (车销针)
 ② 24B 外壳 带 6 个模块, 导线截面 Wire gauge: 0.5 mm² (冲压针)