

M23 连接器 ROUND PLUG CONNECTOR

现场接线
Field-wireable

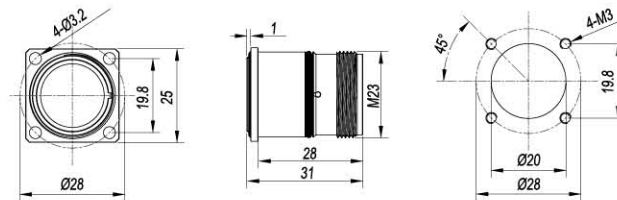
M23 圆形连接器 Round plug connector (9,12)-pole
插针 Male 0° 法兰安装 Flange installation



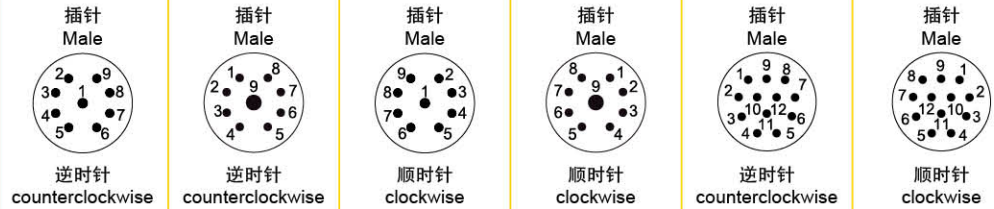
M23 信号连接器

1 型号 Form No.	923393	923395	923394	923397	923321	923322
极数 Suppression	9xØ1mm 9-pole	8x1mm+1x2mm 9-pole	9xØ1mm 9-pole	8x1mm+1x2mm 9-pole	12xØ1mm 12-pole	12xØ1mm 12-pole

尺寸图 Description



针脚排序
Contact layout



2 技术参数 Technical data

额定电压 Supply voltage	160 V AC/DC
额定电流 Current per contact	10A
防护等级 Protection	IP67- 插孔插针配合拧紧 When plugged and screwed down
温度范围 Temperature range	-20...+130°C
测试电压 (两插针之间) Test voltage	2500V
外壳材料 Housing material	锌合金压铸件 黄铜, 镀镍 Zinc alloy die casting Brass, nickel plating
绝缘内嵌体材料 Insulation embedded body material	PA66/PBT, UL 94/V0

接触件 (插针)
Contact element (male)



类型 Type	压线范围 Wire diameter	订货号 Part No.
插针 Male Ø1mm	0.03-0.34mm ²	916101
	0.14-1.00mm ²	916121
插针 Male Ø2mm	0.50-1.50mm ²	916131
	0.50-1.50mm ²	956121

订货号 Part No.

可参考: 1.0.1
Reference: 1.0.1

1 型号 Form

备注 Notes

配件及技术参数页面 Accessories and technical page: 6.6.5

M23 连接器 ROUND PLUG CONNECTOR



现场接线
Field-wireable

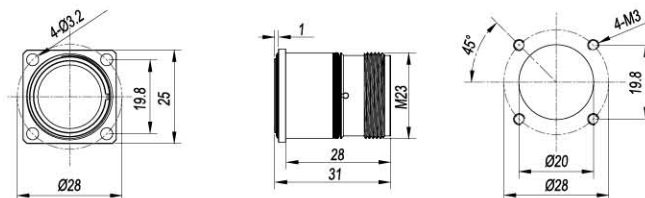
M23 圆形连接器 Round plug connector (17,16+3)-pole
插针 Male 0° 法兰安装 Flange installation



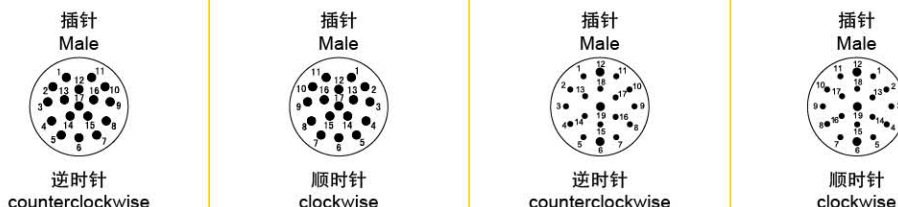
M23 信号连接器

1	型号 Form	No.	923371	923372	923391	923392
	极数 Suppression		17xØ1mm 17-pole	17xØ1mm 17-pole	16xØ1mm+3xØ1.5mm 19-pole	16xØ1mm+3xØ1.5mm 19-pole

尺寸图 Description



针脚排序
Contact layout



2	技术参数 Technical data				
	额定电压 Supply voltage	160 V AC/DC			125 V AC/DC
	额定电流 Current per contact	10A			
	防护等级 Protection	IP67- 插孔插针配合拧紧 When plugged and screwed down			
	温度范围 Temperature range	-20...+130°C			
	测试电压 (两插针之间) Test voltage	2500V			
	外壳材料 Housing material	锌合金压铸件 黄铜, 镀镍 Zinc alloy die casting Brass, nickel plating			
	绝缘内嵌体材料 Insulation embedded body material	PA66/PBT, UL 94/V0			

接触件 (插针)
Contact element (male)



类型 Type	压线范围 Wire diameter	订货号 Part No.
插针 Male Ø1mm	0.03-0.34mm ²	916101
	0.14-1.00mm ²	916121
	0.50-1.50mm ²	916131
插针 Male Ø1.5mm	0.24-1.00mm ²	936101
	0.50-1.50mm ²	936121

订货号 Part No.

可参考: 1.0.1
Reference: 1.0.1

1 型号 Form

备注 Notes

配件及技术参数页面 Accessories and technical page: 6.6.5