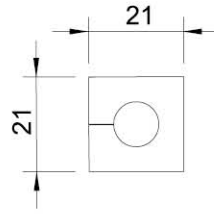


KEL 电缆引入系统 CABLE ENTRY SYSTEMS

KT 模块 (小) Inserts, small






材料 Material: 合成橡胶 Elastomer

阻燃等级 Flame class: UL94-V0, 自熄灭 Self-extinguishing

防护等级 Protection degree: IP65

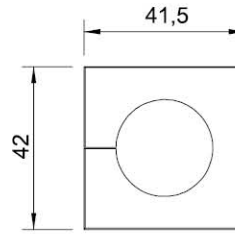
温度范围 Temperature: - 40°C to + 90°C (静态 Static)

特性 Properties: 无卤, 无硅 Halogen-free, silicone-free

示意图 Description	型号 Type	订货号 Part No. 灰色 Grey	夹紧范围 Clamping range
BTK 	BTK	99041251	无
KT (小) 	KT 2	99039934	2-3 mm
	KT 3	99041203	3-4 mm
	KT 4	99041204	4-5 mm
	KT 5	99041205	5-6 mm
	KT 6	99041206	6-7 mm
	KT 7	99041207	7-8 mm
	KT 8	99041208	8-9 mm
	KT 9	99041209	9-10 mm
	KT 10	99041210	10-11 mm
	KT 11	99041211	11-12 mm
	KT 12	99041212	12-13 mm
	KT 13	99041213	13-14 mm
	KT 14	99041214	14-15 mm
	KT 15	99041215	15-16 mm
	KTs 16	99039901	16 mm
	KT 2/x 	KT 2/3	99039939
KT 2/4		99039906	2×ø4mm
KT 2/5		99041200	2×ø5mm
KT 2/6		99041201	2×ø6mm
KT 2/7		99041202	2×ø7mm
KT 2/8		99039917	2×ø8mm
KT 4/x 	KT 4/3	99039914	4×ø3mm
	KT 4/4	99039909	4×ø4mm
	KT 4/5	99039908	4×ø5mm
	KT 4/6	99039932	4×ø6mm

KEL 电缆引入系统 CABLE ENTRY SYSTEMS

KT 模块 (大) Inserts, large



材料 Material: 合成橡胶 Elastomer
 阻燃等级 Flame class: UL94-V0, 自熄灭 Self-extinguishing
 防护等级 Protection degree: IP65
 温度范围 Temperature: - 40°C to + 90°C (静态 Static)
 特性 Properties: 无卤, 无硅 Halogen-free, silicone-free

KEL 电缆引入系统

示意图 Description	型号 Type	订货号 Part No. 灰色 Grey	夹紧范围 Clamping range
ATG 	ATG	99041253	适配器插入
BTG 	BTG	99041252	填充块
KT (大) 	KT 16 KT 17 KT 18 KT 19 KT 20 KT 21 KT 22 KT 23 KT 24 KT 25 KT 26 KT 27 KT 28 KT 29 KT 30 KT 31 KT 32 KT 33 KT 34	99041216 99041217 99041218 99041219 99041220 99041221 99041222 99041223 99041224 99041225 99041226 99041227 99041228 99041229 99041230 99041231 99041232 99041233 99041234	16-17 mm 17-18 mm 18-19mm 19-20 mm 20-21 mm 21-22mm 22-23 mm 23-24 mm 24-25mm 25-26 mm 26-27 mm 27-28mm 28-29 mm 29-30 mm 30-31 mm 31-32 mm 32-33 mm 33-34 mm 34-35 mm