

HK-4/0 HK-4/2 HK-4/8 系列技术参数 SERIES TECHNICAL PARAMETERS

组合型插芯技术参数 Technical characteristics

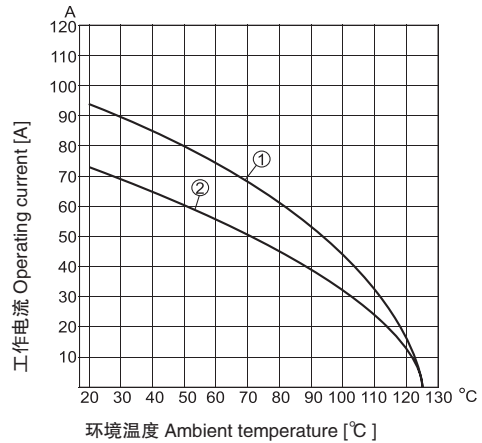
1 插芯 Inserts

接插件针数 InsertsNumber of contacts	4/2,4/2,4/8+PE
依据 EN 61984 的电气数据 Electrical data	
电源区 Power area	
- 额定电流 Rated current	80A
- 额定电压 Rated voltage	830V
- 额定脉冲电压 Rated impulse voltage	8kV
- 污染程度 Pollution degree	3
- 当污染程度 2 时的参数 Pollution degree 2 also	80A 1000V 8kV 2
信号区 Signal area	
- 额定电流 Rated current	16A
- 额定电压 Rated voltage	400V
- 额定脉冲电压 Rated impulse voltage	6kV
- 污染程度 Pollution degree	3
- 当污染程度 2 时的参数 Pollution degree 2 also	16A 400V/690V 6kV 2
依据 UL/CSA 额定电压 Rated voltage	600V/300V
绝缘电阻 Insulation resistance	$\geq 10^{10}\Omega$
材料 Material	聚碳酸酯 Polycarbonate
工作温度范围 Limiting temperatures	-40°C ...+125°C
阻燃等级 Flammability acc. to (UL94)	V0
可拔插次数 Mating cycles	≥ 500

电流负载能力 Current carrying capacity

电流负载能力所受的限制主要来自包含接插针的接插体可承受的最大温度测试和控制过程依据 DIN EN 60512-5

Current load capacity, mainly from the restrictions include plug the plug of the needle body can withstand maximum temperature Testing and control process according to DIN EN 60512-5



① 导线截面 Wire gauge: 16 mm²

② 导线截面 Wire gauge: 10 mm²

2 插针 Contacts

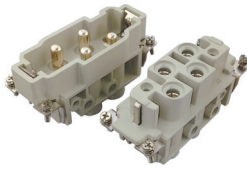
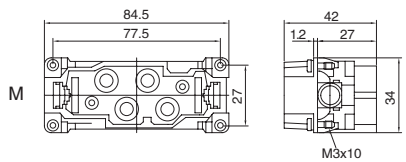
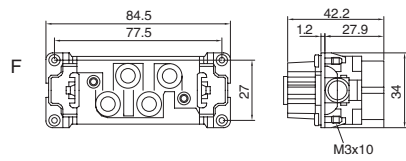
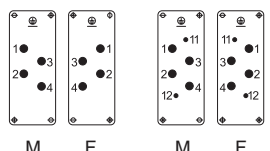
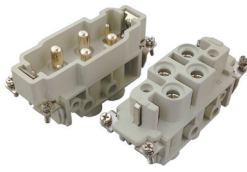

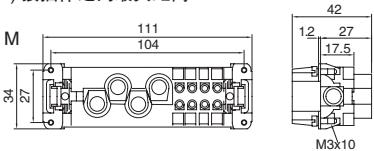
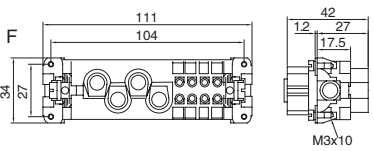
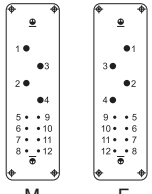
电源针 Power contacts	
材料 Material	铜合金 Copper alloy
表面处理 Surface	镀银 Hard-silver plated
接触电阻 Contact resistance	$\leq 0.3 \text{ m}\Omega$
螺钉连接 Screw terminal	
- mm ²	1.5-16 mm ²
- AWG	16-6
- 拧紧力矩 Tightening torque	
- mm ²	1.5 2.5 4 6 10 16
- N.m	1.2 2 3 3 3 3
- 剥线长度 Stripping length	14mm
信号针 Signal contacts	
材料 Material	铜合金 Copper alloy
表面处理 Surface	镀银 Hard-silver plated
接触电阻 Contact resistance	$\leq 1 \text{ m}\Omega$
螺钉连接 Screw terminal	
- mm ²	0.5-2.5 mm ²
- AWG	20-14
- 拧紧力矩 Tightening torque	0.5 Nm
- 剥线长度 Stripping length	7.5mm



HK-4/0 HK-4/2 HK-4/8 系列技术参数 SERIES TECHNICAL PARAMETERS



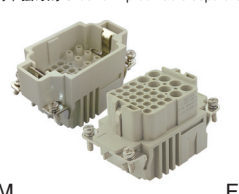
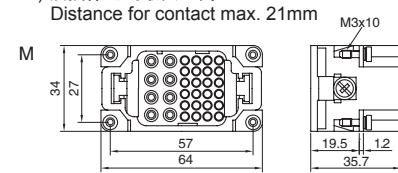
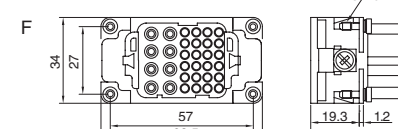
HK-4/0 额定电流 Rated current: 80 A 额定电压 Rated voltage: 690 V
 HK-4/2 额定电流 Rated current: 80 A / 16A 额定电压 Rated voltage: 690 V / 400V
 HK-4/8 额定电流 Rated current: 80 A / 16A 额定电压 Rated voltage: 690 V / 400V

		订货号 Part No.		尺寸图 Drawing (mm)	
		公接插针 Male insert	母接插针 Female insert		
接线方式: 螺钉压接 Termination methods: Screw terminal  M F	HK-4/0-M	1380062611		1) 接插体之间最大距离 21mm Distance for contact max. 21mm 	
	HK-4/0-F		1380062711		
线规 Wire gauge: 1.5-16 mm ² 适配 H16B 外壳, 详见 7.13.8 页 Suitable for H16B housing, see page 7.13.8				接插针排序 Contact arrangement  M F M F HK-004/0 HK-004/2	
接线方式: 螺钉压接 Termination methods: Screw terminal  M F	HK-4/2-M	1380062601			
	HK-4/2-F		1380062701		
线规 Wire gauge: 1.5-16 mm ² / 0.5-2.5 mm ² 适配 H16B 外壳, 详见 7.13.8 页 Suitable for H16B housing, see page 7.13.8					
接线方式: 螺钉压接 Termination methods: Screw terminal  M F	HK-4/8-M	1380122601		1) 接插体之间最大距离 21mm 	
	HK-4/8-F		1380122701		
线规 Wire gauge: 1.5-16 mm ² 适配 H24B 外壳, 详见 7.13.12 页 Suitable for H24B housing, see page 7.13.12				接插针排序 Contact arrangement  M F	

HK 接插体

HK-8/24 组合型大电流接插体 HIGH CURRENT CONNECTORS

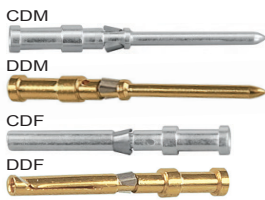
额定电流 Rated current: 16 A / 10A 额定电压 Rated voltage: 400 V / 250V

接线方式: 冷压接 Termination methods: Crimp terminal (冷压针请单独订购 Order crimp contacts separately)	型号 Type	订货号 Part No.		尺寸图 Drawing (mm)	
		公接插针 Male insert	母接插针 Female insert		
 <p>M F</p> <p>线规 Wire gauge: 0.5-4.0 mm² / 0.14-2.5 mm² 适配 H10B 外壳, 详见 7.13.4 页 Suitable for H10B housing, see page 7.13.4</p>	HK-8/24-M	1380323001		1) 接插体之间最大距离 21mm Distance for contact max. 21mm 	
	HK-8/24-F		1380323101		

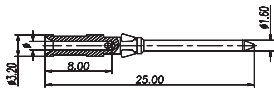
10A 插针 Contacts

技术参数 Technical data

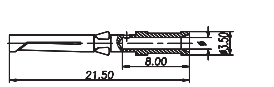
材质: 铜镀银 / 金
Material: Copper, hard silver / gold plated
接触电阻 Contact resistance: $\leq 3\text{ m}\Omega$
接线形式: 冷压接线
Termination methods: Crimp connection



10A 公插针 Male



10A 母插针 Female



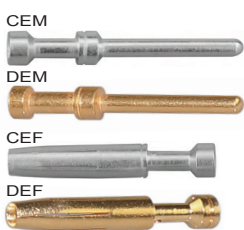
线径 (mm ²) Wire gauge	接线长度 Stripping length	镀银冷压针 Crimp contacts, silver-plated 型号 Type	订货号 Part No.	镀金冷压针 Crimp contacts, gold-plated 型号 Type	订货号 Part No.	
0.14-0.37	AWG26-22	8.0mm	CDM-0.37	3150006104	DDM-0.37	3150006124
0.5	AWG20	8.0mm	CDM-0.5	3150006103	DDM-0.5	3150006123
0.75	AWG18	8.0mm	CDM-0.75	3150006105	DDM-0.75	3150006125
1.0	AWG18	8.0mm	CDM-1.0	3150006102	DDM-1.0	3150006122
1.5	AWG16	8.0mm	CDM-1.5	3150006101	DDM-1.5	3150006121
2.5	AWG14	8.0mm	CDM-2.5	3150006106	DDM-2.5	3150006126

线径 (mm ²) Wire gauge	接线长度 Stripping length	镀银冷压针 Crimp contacts, silver-plated 型号 Type	订货号 Part No.	镀金冷压针 Crimp contacts, gold-plated 型号 Type	订货号 Part No.	
0.14-0.37	AWG26-22	8.0mm	CDF-0.37	3150006204	DDF-0.37	3150006224
0.5	AWG20	8.0mm	CDF-0.5	3150006203	DDF-0.5	3150006223
0.75	AWG18	8.0mm	CDF-0.75	3150006205	DDF-0.75	3150006225
1.0	AWG18	8.0mm	CDF-1.0	3150006202	DDF-1.0	3150006222
1.5	AWG16	8.0mm	CDF-1.5	3150006201	DDF-1.5	3150006221
2.5	AWG14	8.0mm	CDF-2.5	3150006206	DDF-2.5	3150006226

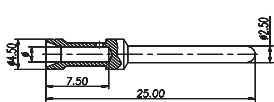
16A 插针 Contacts

技术参数 Technical data

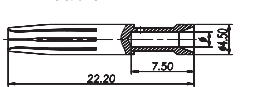
材质: 铜镀银 / 金
Material: Copper, hard silver / gold plated
接触电阻 Contact resistance: $\leq 1\text{ m}\Omega$
接线形式: 冷压接线
Termination methods: Crimp connection



16A 公插针 Male



16A 母插针 Female



线径 (mm ²) Wire gauge	接线长度 Stripping length	镀银冷压针 Crimp contacts, silver-plated 型号 Type	订货号 Part No.	镀金冷压针 Crimp contacts, gold-plated 型号 Type	订货号 Part No.	
0.14-0.37	AWG26-22	7.5mm	CEM-0.37	3330006127	DEM-0.37	3330006117
0.5	AWG20	7.5mm	CEM-0.5	3330006121	DEM-0.5	3330006122
0.75	AWG18	7.5mm	CEM-0.75	3330006114	DEM-0.75	3330006115
1.0	AWG18	7.5mm	CEM-1.0	3330006105	DEM-1.0	3330006118
1.5	AWG16	7.5mm	CEM-1.5	3330006104	DEM-1.5	3330006116
2.5	AWG14	7.5mm	CEM-2.5	3330006102	DEM-2.5	3330006123
4.0	AWG12	7.5mm	CEM-4.0	3330006107	DEM-4.0	3330006119

线径 (mm ²) Wire gauge	接线长度 Stripping length	镀银冷压针 Crimp contacts, silver-plated 型号 Type	订货号 Part No.	镀金冷压针 Crimp contacts, gold-plated 型号 Type	订货号 Part No.	
0.14-0.37	AWG26-22	7.5mm	CEF-0.37	3330006227	DEF-0.37	3330006217
0.5	AWG20	7.5mm	CEF-0.5	3330006221	DEF-0.5	3330006222
0.75	AWG18	7.5mm	CEF-0.75	3330006214	DEF-0.75	3330006215
1.0	AWG18	7.5mm	CEF-1.0	3330006205	DEF-1.0	3330006218
1.5	AWG16	7.5mm	CEF-1.5	3330006204	DEF-1.5	3330006216
2.5	AWG14	7.5mm	CEF-2.5	3330006202	DEF-2.5	3330006223
4.0	AWG12	7.5mm	CEF-4.0	3330006207	DEF-4.0	3330006219

技术参数 Technical characteristics

1 插芯 Inserts

接插件针数 Inserts/Number of contacts	8/24+PE
依据 DIN EN 61984 的电气数据 Electrical data	
电源区 Power area	
- 额定电流 Rated current	16A
- 额定电压 Rated voltage	230V / 400V
- 额定脉冲电压 Rated impulse voltage	4kV
- 污染程度 Pollution degree	3
- 污染程度 2 时的参数 Pollution degree 2 also	10A 250V 4kV 2
信号区 Signal area	
- 额定电流 Rated current	10A
- 额定电压 Rated voltage	160V
- 额定脉冲电压 Rated impulse voltage	2.5kV
- 污染程度 Pollution degree	3
依据 UL/CSA 额定电压 Rated voltage	600V/300V
绝缘电阻 Insulation resistance	$\geq 10^{10}\Omega$
材料 Material	聚碳酸酯 Polycarbonate
工作温度范围 Limiting temperatures	-40°C ... +125°C
阻燃等级 Flammability acc. to (UL94)	V0
可拔插次数 Mating cycles	≥ 500

2 插针 Contacts

电源针 Power contacts	
材料 Material	铜合金 Copper alloy
表面处理 Surface	镀银 Hard-silver plated
	镀金 Hard-gold plated
接触电阻 Contact resistance	$\leq 1\text{ m}\Omega$
冷压连接 Crimp terminal	
-mm ²	0.5-4 mm ²
-AWG	20-12
信号针 Signal contacts	
材料 Material	铜合金 Copper alloy
表面处理 Surface	镀银 Hard-silver plated
	镀金 Hard-gold plated
接触电阻 Contact resistance	$\leq 3\text{ m}\Omega$
冷压连接 Crimp terminal	
-mm ²	0.14-2.5 mm ²
-AWG	25-14

HK-6/36、HK-12/2 大电流接插体 HIGH CURRENT CONNECTORS



额定电流 Rated current: 40A / 10 A 额定电压 Rated voltage: 690 V / 250V

	型号 Type	订货号 Part No.		尺寸图 Drawing (mm)
		公接插针 Male insert	母接插针 Female insert	
接线方式: 冷压接 Termination methods: Crimp terminal (冷压针请单独订购 Order crimp contacts separately)	HK-6/36-M	1380423001		1) 接插体之间最大距离 21mm Distance for contact max. 21mm
	HK-6/36-F		1380423101	
线规 Wire gauge: 1.5-6.0 mm ² / 0.14-2.5 mm ² 适配 H16B 外壳, 详见 7.13.8 页 Suitable for H16B housing, see page 7.13.8				
接线方式: 冷压接 Termination methods: Crimp terminal (冷压针请单独订购 Order crimp contacts separately)	HK-12/2-M	1320123001		1) 接插体之间最大距离 21mm Distance for contact max. 21mm
	HK-12/2-F		1320123101	
线规 Wire gauge: 1.5-6.0 mm ² / 0.14-2.5 mm ² 适配 H16B 外壳, 详见 7.13.8 页 Suitable for H16B housing, see page 7.13.8				

10A 镀银冷压针 Crimp contacts, silver-plated

技术参数 Technical data

材质: 铜镀银 / 金
 Material: Copper, hard silver / gold plated
 接触电阻 Contact resistance: ≤ 3mΩ
 接线形式: 冷压接线
 Termination methods: Crimp connection

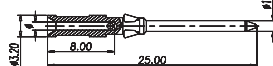
CDM



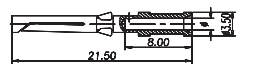
CDF



10A 公插针 Male



10A 母插针 Female



线径 (mm ²) Wire gauge	接线长度 Stripping length	公接插针 Male insert 型号 Type	公接插针 Male insert 订货号 Part No.	母接插针 Female insert 型号 Type	母接插针 Female insert 订货号 Part No.	
0.14-0.37	AWG26-22	8.0mm	CDM-0.37	3150006104	CDF-0.37	3150006204
0.5	AWG20	8.0mm	CDM-0.5	3150006103	CDF-0.5	3150006203
0.75	AWG18	8.0mm	CDM-0.75	3150006105	CDF-0.75	3150006205
1.0	AWG18	8.0mm	CDM-1.0	3150006102	CDF-1.0	3150006202
1.5	AWG16	8.0mm	CDM-1.5	3150006101	CDF-1.5	3150006201
2.5	AWG14	8.0mm	CDM-2.5	3150006106	CDF-2.5	3150006206

40A 插针 Contacts

技术参数 Technical data

材质: 铜镀银 / 金
 Material: Copper, hard silver / gold plated
 接触电阻 Contact resistance: ≤ 4mΩ
 接线形式: 冷压接线
 Termination methods: Crimp connection

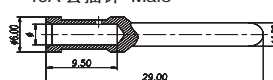
CMM



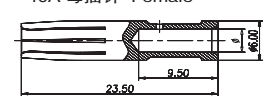
CMF



40A 公插针 Male



40A 母插针 Female



线径 (mm ²) Wire gauge	接线长度 (mm) Stripping length	镀银冷压针 Crimp contacts, silver-plated 型号 Type	镀银冷压针 Crimp contacts, silver-plated 订货号 Part No.	
1.5	AWG16	8.0mm	CMM-1.5	3320006104
2.5	AWG14	8.0mm	CMM-2.5	3320006105
4.0	AWG12	8.0mm	CMM-4.0	3320006107
6.0	AWG10	8.0mm	CMM-6.0	3320006108
10.0	AWG7	8.0mm	CMM-10	3320006109

线径 (mm ²) Wire gauge	接线长度 (mm) Stripping length	镀银冷压针 Crimp contacts, silver-plated 型号 Type	镀银冷压针 Crimp contacts, silver-plated 订货号 Part No.	
1.5	AWG16	8.0mm	CMF-1.5	3320006204
2.5	AWG14	8.0mm	CMF-2.5	3320006205
4.0	AWG12	8.0mm	CMF-4.0	3320006207
6.0	AWG10	8.0mm	CMF-6.0	3320006208
10.0	AWG7	8.0mm	CMF-10	3320006209

技术参数 Technical characteristics

1 插芯 Inserts

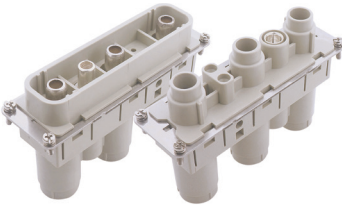
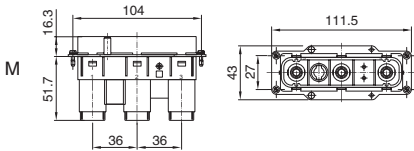
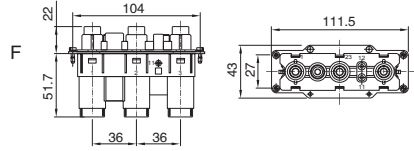
接插件针数 Inserts Number of contacts	- HK-6/36	6/36+PE	12/2+PE
依据 DIN EN 61984 的电气数据 Electrical data	电源区 Power area		
- 额定电流 Rated current	40A		
- 额定电压 Rated voltage	690V		
- 额定脉冲电压 Rated impulse voltage	8kV		
- 污染程度 Pollution degree	3		
信号区 Signal area			
- 额定电流 Rated current	10A		
- 额定电压 Rated voltage	160V		
- 额定脉冲电压 Rated impulse voltage	2.5kV		
- 污染程度 Pollution degree	3		
- 污染程度 2 时的参数 Pollution degree 2 also	10A 250V 4kV 2		
依据 UL/CSA 额定电压 Rated voltage	600V / 300V		
绝缘电阻 Insulation resistance	≥10 ¹⁰ Ω		
材料 Material	聚碳酸酯 Polycarbonate		
工作温度范围 Limiting temperatures	-40°C ... +125°C		
阻燃等级 Flammability	V0		
可接插次数 Mating cycles	≥ 500		

2 插针 Contacts

电源针 Power contacts		
材料 Material	铜合金 Copper alloy	
表面处理 Surface	镀银 Hard-silver plated	
接触电阻 Contact resistance	≤ 0.3 mΩ	
冷连接 Crimp terminal		
-mm ²	1.5-6 mm ²	
-AWG	16-10	
信号针 Signal contacts		
材料 Material	铜合金 Copper alloy	
表面处理 Surface	镀银 Hard-silver plated	
接触电阻 Contact resistance	≤ 3 mΩ	
冷连接 Crimp termina		
-mm ²	0.14-2.5 mm ²	
-AWG	26-14	

HTK-3/0, HTK-3/2 大电流接插芯 HIGH CURRENT CONNECTORS

额定电流 Rated current: 200A 额定电压 Rated voltage: 1150V / 2000 V

接线方式: 轴向螺栓压接 Termination methods: Axial screw terminal	型号 Type	订货号 Part No.		尺寸图 Drawing (mm)
		公接插针 Male insert	母接插针 Female insert	
 <p>M F</p> <p>适配 H24B 外壳, 详见 7.14.7 页 Suitable for H24B housing, see page 7.14.7</p>	HTK-3/0-M	1280032611		<p>1) 接插体之间最大距离 21mm Distance for contact max. 21mm</p> 
	HTK-3/0-F		1280032711	
	HTK-3/2-M	1280052611		
	HTK-3/2-F		1280052711	

技术参数 Technical characteristics

1 插芯 Inserts

接插件针数 Inserts Number of contacts	3/0+PE, 3/2+PE
依据 DIN EN 61984 的电气数据 Electrical data	
电源区 Power area	
- 额定电流 Rated current	200A
- 额定电压 Rated voltage	1150V / 2000V
- 额定脉冲电压 Rated impulse voltage	8kV
- 污染程度 Pollution degree	3
污染程度 2 时的参数 Pollution degree 2 also	200A 2000V 12kV 2
信号区 Signal area	
- 额定电流 Rated current	16A
- 额定电压 Rated voltage	400V
- 额定脉冲电压 Rated impulse voltage	6kV
- 污染程度 Pollution degree	3
污染程度 2 时的参数 Pollution degree 2 also	16A 500V 6kV 2
绝缘电阻 Insulation resistance	$\geq 10^{10}\Omega$
材料 Material	聚碳酸酯 Polycarbonate
工作温度范围 Limiting temperatures	-40°C ... +125°C
依据 UL/CSA 额定电压 Rated voltage	V0
可拔插次数 Mating cycles	≥ 500

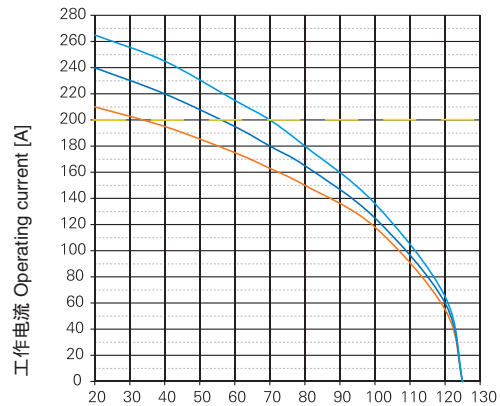
2 插针 Contacts

材料 Material	铜合金 Copper alloy
表面处理 Surface	镀银 Hard-silver plated
接触电阻 Contact resistance	$\leq 0.2 \text{ m}\Omega$
电绞绞线依据 IEC 60 228-5	
轴向螺栓连接 Axial screw terminal	
强电针	
- 导线截面	35-70 mm ²
- AWG	2-00
- 内六角扳手	SW5
- 剥线长度	22mm
	mm ² 35 50 70
- 拧紧力矩	N.m 8 9 10
接地针	
- 导线截面	16-35 mm ²
- AWG	5-2
- 内六角扳手	SW4
- 剥线长度	14mm
- 拧紧力矩	6 N.m
信号针 (仅 HK-003/2) Signal contacts	
- 横截面	2.5 mm ²
- AWG	14
- 剥线长度	7mm
- 拧紧力矩	0.5 N.m

电流负载能力 Current carrying capacity

电流负载能力所受的限制主要来自包含接插针的接插体可承受的最大温度测试和控制过程依据 DIN EN 60512-5

Current load capacity, mainly from the restrictions include plug the plug of the needle body can withstand maximum temperature Testing and control process according to DIN EN 60512-5



环境温度 Ambient temperature [°C]

— 导线截面 Wire gauge: 70 mm²
— 导线截面 Wire gauge: 50 mm²
— 导线截面 Wire gauge: 35 mm²

24B 高防护外壳带 HK-003/0 插芯