

# 常用套件组合 SET GENERAL INTRODUCTION

## HA 系列 Series 3 回路 250V,10A



开孔侧出 Side-entry & bulkhead

订货号 Part No. 8003001120



开孔顶出 Top-entry & bulkhead

订货号 Part No. 8003002120



侧开孔顶出 Top-entry & Side-bulkhead

订货号 Part No. 8003003120



表面顶出 Top-entry & surface

订货号 Part No. 8003004120



对接顶出 Top-entry & cable to cable

订货号 Part No. 8003009120

## HA 系列 Series 4 回路 250V,10A



开孔侧出 Side-entry & bulkhead

订货号 Part No. 8004001120



开孔顶出 Top-entry & bulkhead

订货号 Part No. 8004002120



侧开孔顶出 Top-entry & Side-bulkhead

订货号 Part No. 8004003120



表面顶出 Top-entry & surface

订货号 Part No. 8004004120

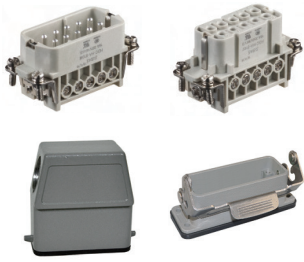


对接顶出 Top-entry & cable to cable

订货号 Part No. 8004009120

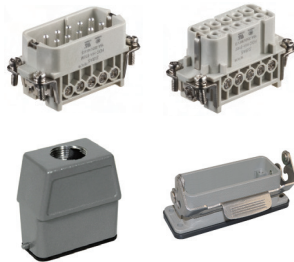
# 常用套件组合 SET GENERAL INTRODUCTION

## HA 系列 Series 10 回路 250V,16A



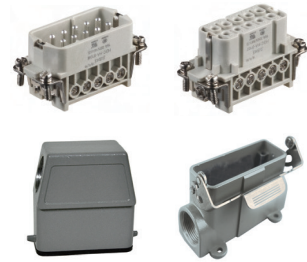
开孔侧出 Side-entry & bulkhead

订货号 Part No. 8010001120



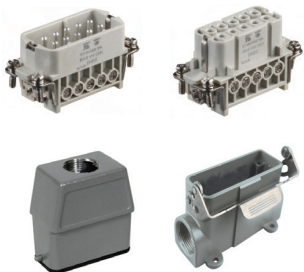
开孔顶出 Top-entry & bulkhead

订货号 Part No. 8010002120



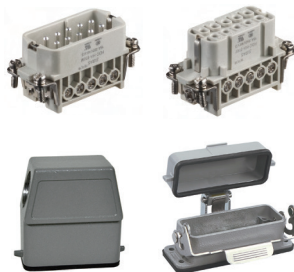
表面侧出 Side-entry & surface

订货号 Part No. 8010003220



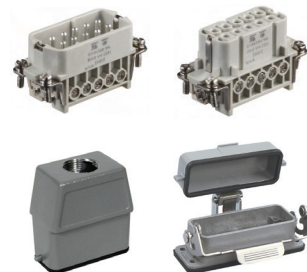
表面顶出 Top-entry & surface

订货号 Part No. 8010004220



开孔带盖侧出 Side-entry & bulkhead cover

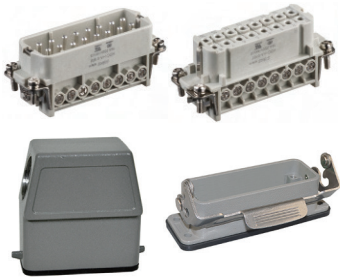
订货号 Part No. 8010005120



开孔带盖顶出 Top-entry & bulkhead cover

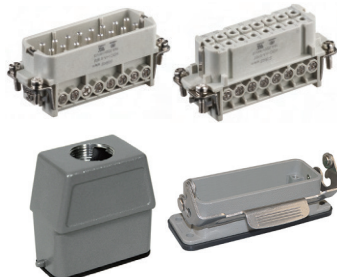
订货号 Part No. 8010006120

## HA 系列 Series 16 回路 250V,16A



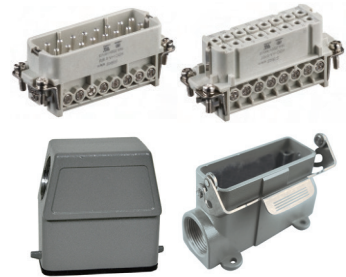
开孔侧出 Side-entry & bulkhead

订货号 Part No. 8016001125



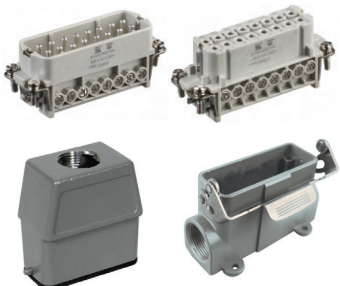
开孔顶出 Top-entry & bulkhead

订货号 Part No. 8016002125



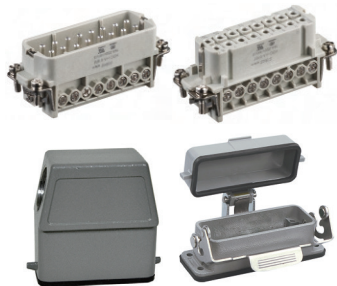
表面侧出 Side-entry & surface

订货号 Part No. 8016003225



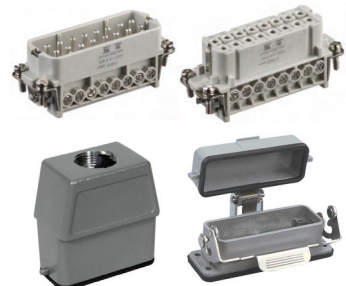
表面顶出 Top-entry & surface

订货号 Part No. 8016004225



开孔带盖侧出 Side-entry & bulkhead cover

订货号 Part No. 8016005125



开孔带盖顶出 Top-entry & bulkhead cover

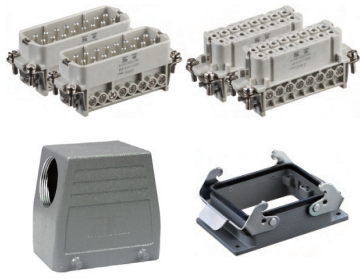
订货号 Part No. 8016006125

# 常用套件组合 SET GENERAL INTRODUCTION

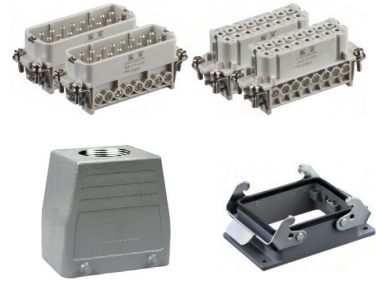


常用套件组合

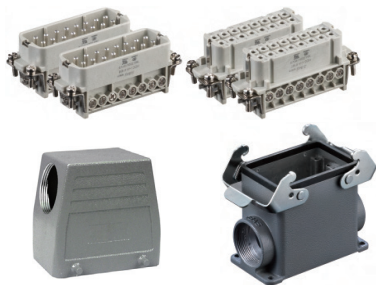
## HA 系列 Series 32 回路 250V,16A



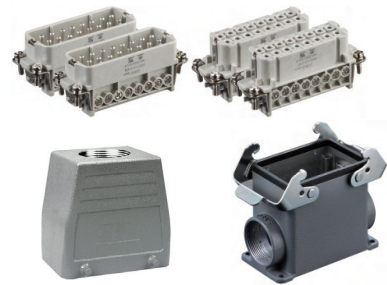
开孔侧出 Side-entry & bulkhead  
 订货号 Part No. 8032001132



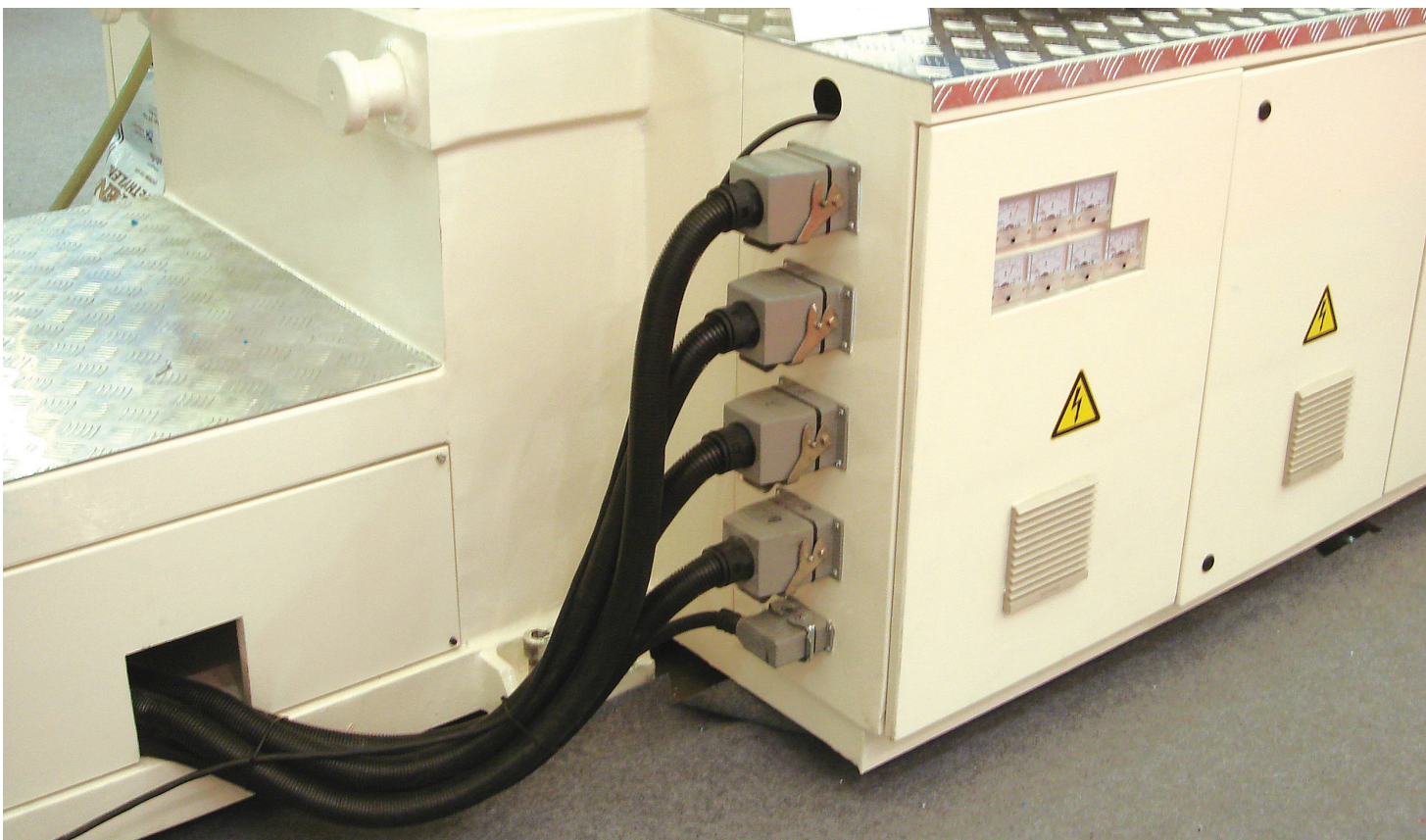
开孔顶出 Top-entry & bulkhead  
 订货号 Part No. 8032002132



表面侧出 Side-entry & surface  
 订货号 Part No. 8032003132

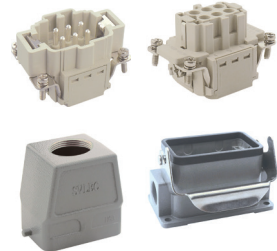
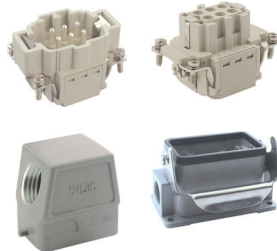


表面顶出 Top-entry & surface  
 订货号 Part No. 8032004132



# 常用套件组合 SET GENERAL INTRODUCTION

## HE 系列 Series 6 回路 500V,16A



开孔侧出 Side-entry & bulkhead

螺钉压接订货号 Part No.	8006101120
快速压接订货号 Part No.	8106101120

开孔顶出 Top-entry & bulkhead

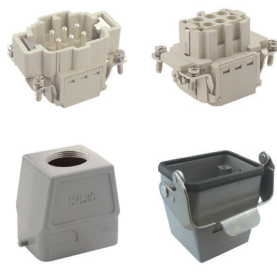
螺钉压接订货号 Part No.	8006102120
快速压接订货号 Part No.	8106102120

表面侧出 Side-entry & surface

螺钉压接订货号 Part No.	8006103220
快速压接订货号 Part No.	8106103220

表面顶出 Top-entry & surface

螺钉压接订货号 Part No.	8006104220
快速压接订货号 Part No.	8106104220



开孔带盖侧出 Side-entry & bulkhead cover

螺钉压接订货号 Part No.	8006105120
快速压接订货号 Part No.	8106105120

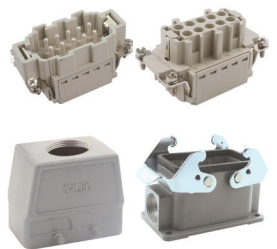
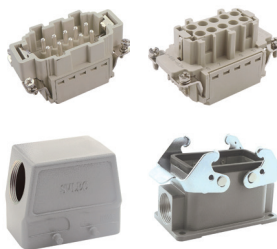
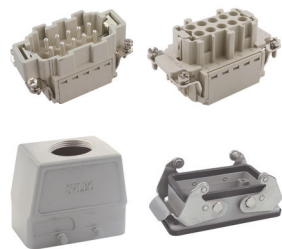
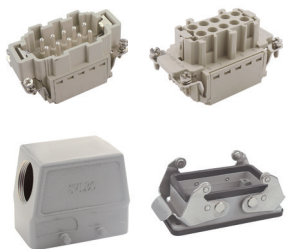
开孔带盖顶出 Top-entry & bulkhead cover

螺钉压接订货号 Part No.	8006106120
快速压接订货号 Part No.	8106106120

对接顶出 Top-entry & cable to cable

螺钉压接订货号 Part No.	8006109220
快速压接订货号 Part No.	8106109220

## HE 系列 Series 10 回路 500V,16A



开孔侧出 Side-entry & bulkhead

螺钉压接订货号 Part No.	8010101120
快速压接订货号 Part No.	8110101120

开孔顶出 Top-entry & bulkhead

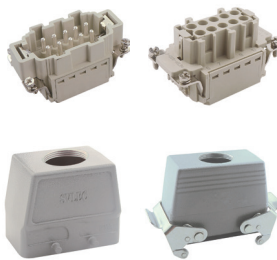
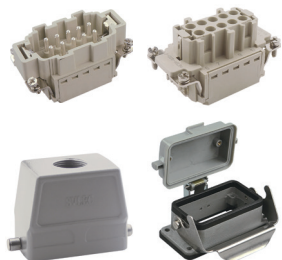
螺钉压接订货号 Part No.	8010102120
快速压接订货号 Part No.	8110102120

表面侧出 Side-entry & surface

螺钉压接订货号 Part No.	8010103220
快速压接订货号 Part No.	8110103220

表面顶出 Top-entry & surface

螺钉压接订货号 Part No.	8010104220
快速压接订货号 Part No.	8110104220



开孔带盖侧出 Side-entry & bulkhead cover

螺钉压接订货号 Part No.	8010105120
快速压接订货号 Part No.	8110105120

开孔带盖顶出 Top-entry & bulkhead cover

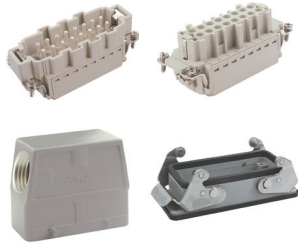
螺钉压接订货号 Part No.	8010106120
快速压接订货号 Part No.	8110106120

对接顶出 Top-entry & cable to cable

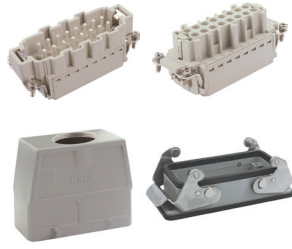
螺钉压接订货号 Part No.	8010109220
快速压接订货号 Part No.	8110109220

# 常用套件组合 SET GENERAL INTRODUCTION

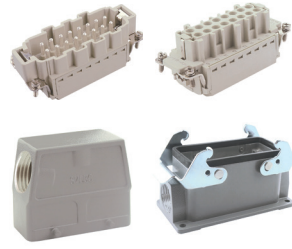
## HE 系列 Series 16 回路 500V,16A



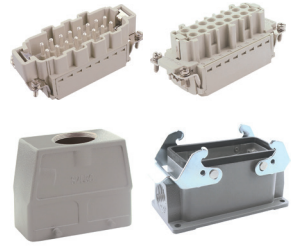
开孔侧出 Side-entry & bulkhead	
螺钉压接订货号 Part No.	801610125
快速压接订货号 Part No.	811610125



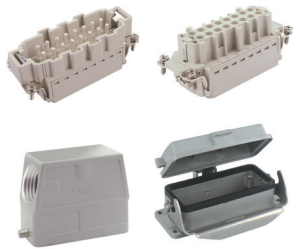
开孔顶出 Top-entry & bulkhead	
螺钉压接订货号 Part No.	8016102125
快速压接订货号 Part No.	8116102125



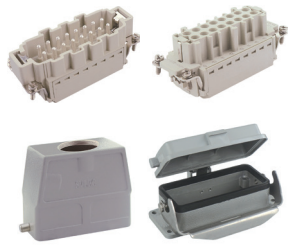
表面侧出 Side-entry & surface	
螺钉压接订货号 Part No.	8016103225
快速压接订货号 Part No.	8116103225



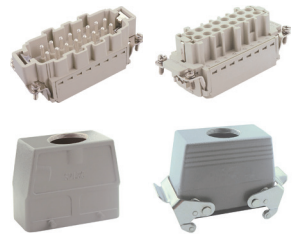
表面顶出 Top-entry & surface	
螺钉压接订货号 Part No.	8016104225
快速压接订货号 Part No.	8116104225



开孔带盖侧出 Side-entry & bulkhead cover	
螺钉压接订货号 Part No.	8016105125
快速压接订货号 Part No.	8116105125

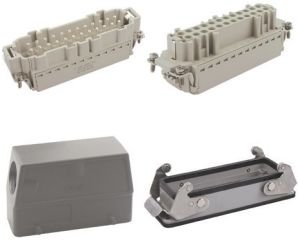


开孔带盖顶出 Top-entry & bulkhead cover	
螺钉压接订货号 Part No.	8016106125
快速压接订货号 Part No.	8116106125

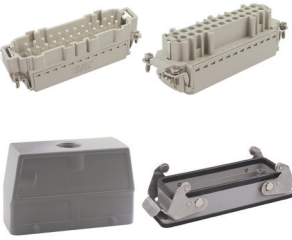


对接顶出 Top-entry & cable to cable	
螺钉压接订货号 Part No.	8016109225
快速压接订货号 Part No.	8116109225

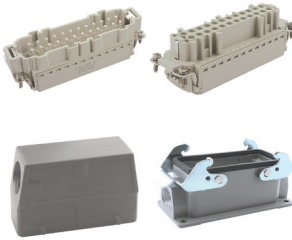
## HE 系列 Series 24 回路 500V,16A



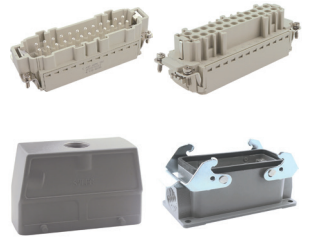
开孔侧出 Side-entry & bulkhead	
螺钉压接订货号 Part No.	8024101125
快速压接订货号 Part No.	8124101125



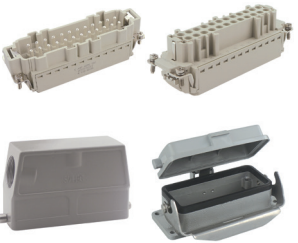
开孔顶出 Top-entry & bulkhead	
螺钉压接订货号 Part No.	8024102125
快速压接订货号 Part No.	8124102125



表面侧出 Side-entry & surface	
螺钉压接订货号 Part No.	8024103225
快速压接订货号 Part No.	8124103225



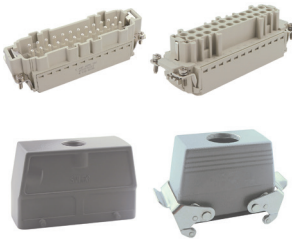
表面顶出 Top-entry & surface	
螺钉压接订货号 Part No.	8024104225
快速压接订货号 Part No.	8124104225



开孔带盖侧出 Side-entry & bulkhead cover	
螺钉压接订货号 Part No.	8024105125
快速压接订货号 Part No.	8124105125



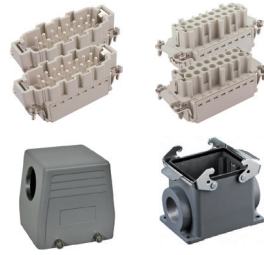
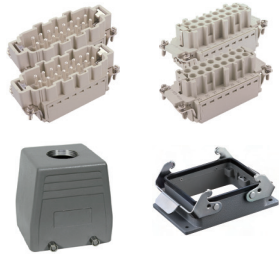
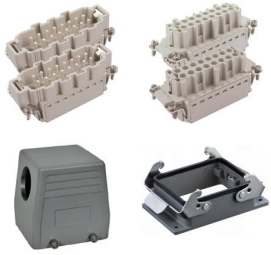
开孔带盖顶出 Top-entry & bulkhead cover	
螺钉压接订货号 Part No.	8024106125
快速压接订货号 Part No.	8124106125



对接顶出 Top-entry & cable to cable	
螺钉压接订货号 Part No.	8024109225
快速压接订货号 Part No.	8124109225

# 常用套件组合 SET GENERAL INTRODUCTION

## HE 系列 Series 32 回路 500V,16A

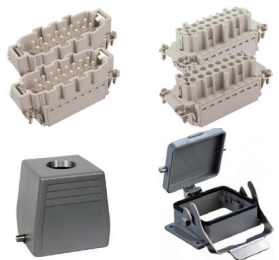


开孔侧出 Side-entry & bulkhead	
螺钉压接订货号 Part No.	8032101132
快速压接订货号 Part No.	8132101132

开孔顶出 Top-entry & bulkhead	
螺钉压接订货号 Part No.	8032102132
快速压接订货号 Part No.	8132102132

表面侧出 Side-entry & surface	
螺钉压接订货号 Part No.	8032103232
快速压接订货号 Part No.	8132103232

表面顶出 Top-entry & surface	
螺钉压接订货号 Part No.	8032104232
快速压接订货号 Part No.	8132104232



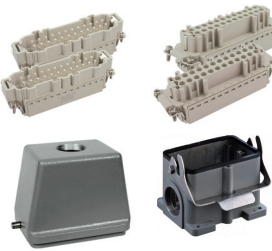
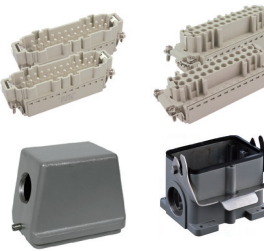
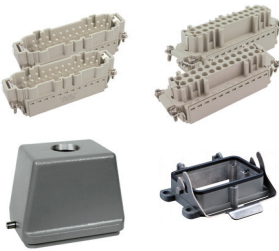
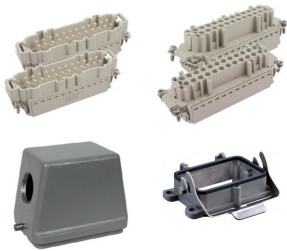
开孔带盖侧出 Side-entry & bulkhead cover	
螺钉压接订货号 Part No.	8032105132
快速压接订货号 Part No.	8132105132

开孔带盖顶出 Top-entry & bulkhead cover	
螺钉压接订货号 Part No.	8032106132
快速压接订货号 Part No.	8132106132

对接顶出 Top-entry & cable to cable	
螺钉压接订货号 Part No.	8032109232
快速压接订货号 Part No.	8132109232

开孔单扣侧出 Side-entry & bulkhead	
螺钉压接订货号 Part No.	8032111132
快速压接订货号 Part No.	8132111132

## HE 系列 Series 48 回路 500V,16A

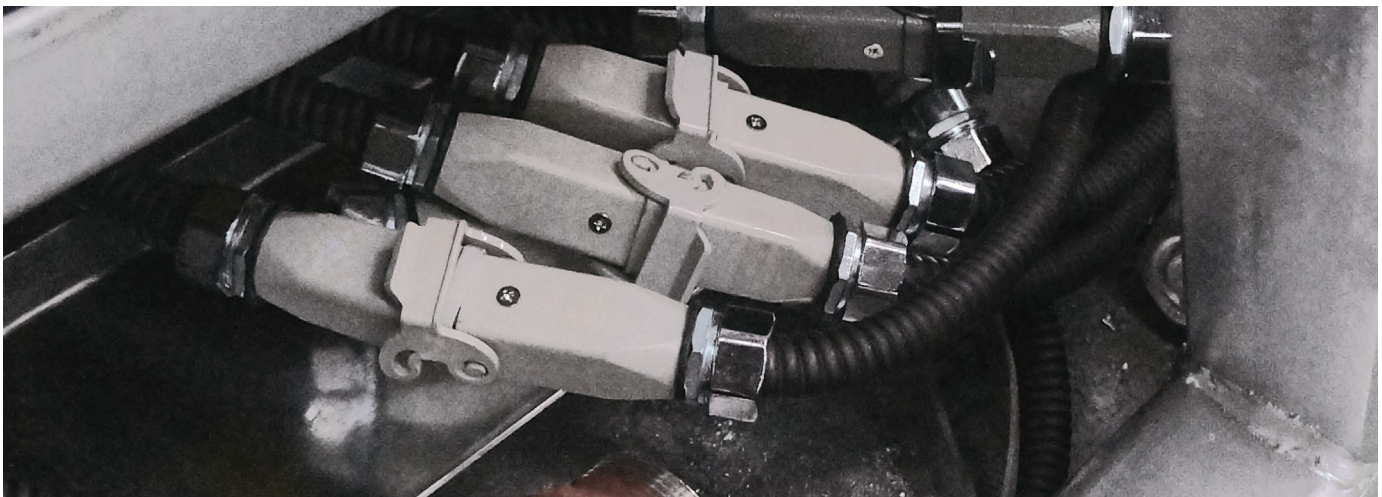


开孔侧出 Side-entry & bulkhead	
螺钉压接订货号 Part No.	8048101132
快速压接订货号 Part No.	8148101132

开孔顶出 Top-entry & bulkhead	
螺钉压接订货号 Part No.	8048102132
快速压接订货号 Part No.	8148102132

表面侧出 Side-entry & surface	
螺钉压接订货号 Part No.	8048103232
快速压接订货号 Part No.	8148103232

表面顶出 Top-entry & surface	
螺钉压接订货号 Part No.	8048104232
快速压接订货号 Part No.	8148104232

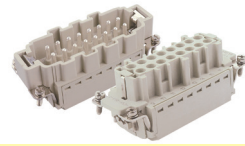


常用套件组合

# 直插式重载连接器产品介绍 QUICK LOCK TERMINAL

## 产品研发背景 Product development background

随着人工成本的持续升高，产品成本随之增加，导致工业设备厂家失去产品竞争力；而大部分工时的消耗发生在基础工艺工序；因此，有必要对基础元件的产品进行结构优化，提高工作效率，SVL 直插式连接器颠覆传统接线工艺，在满足传统螺钉压接、笼式压接连接器，所有功能以外，在使用效率上有大幅提高。



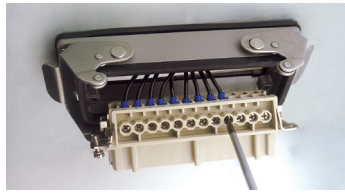
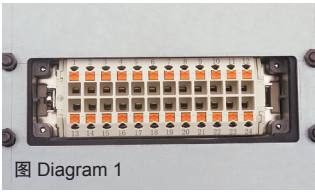
产品推荐

## 功能描述 Function description

**1** 在开孔安装的场景，直插式连接器可实现连接器预安装在柜体上，再接线，如图一

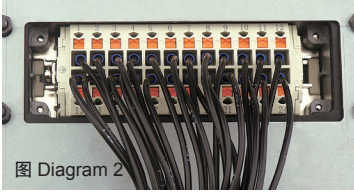
可实现连接器预安装在柜体上，再接线

不能实现连接器预安装在柜体上，需先把底座固定在柜体上，然后把线接在芯件上，在把芯件固定到底座上

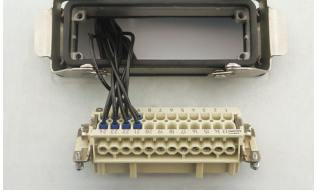


**2** 为不影响柜内接线的整洁及规范、柜内的线束长度一般会尽量缩短，螺钉安装的连接器由于压接螺丝被壳体遮挡，需要把线预留的长一些拉到柜体外，先接到连接器上再固定外壳，这时柜内的线就会过长，影响布线工艺 如图二

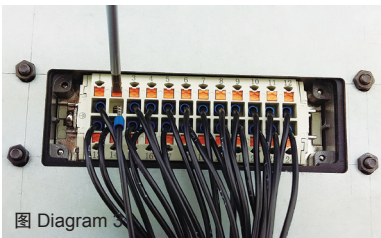
直插式 Quick lock terminal



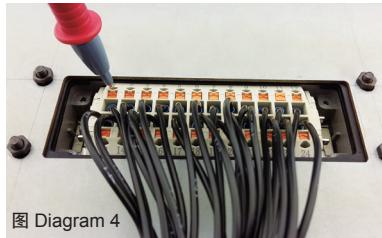
其它压接方式 Other terminal



**3** 直插式接线方式可轻松的接线，当产品需增减某些线束时，直插式连接器也不需要拆装连接器壳体就可实现，如图三



**4** 直插式连接器为用户预留的测试孔，可实现带电测试，如图四



**5** 直插式连接器运用编码块（图五）替代传统的编码销，实现多个连接器防插错，工艺简单、成本极低、将编码块压入插槽内即可实现（图六）

图 Diagram 5

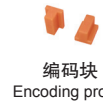
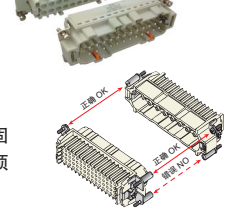


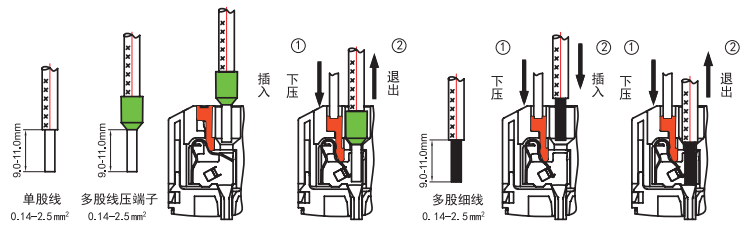
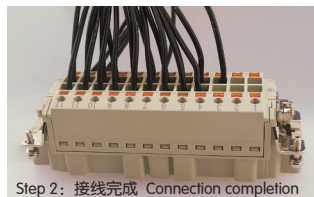
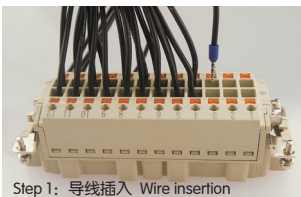
图 6  
Diagram



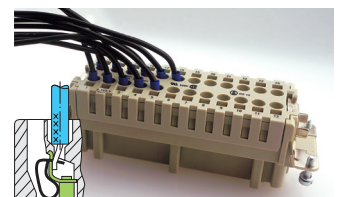
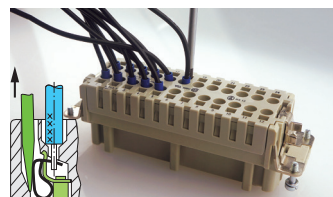
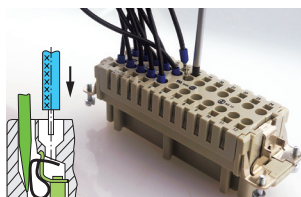
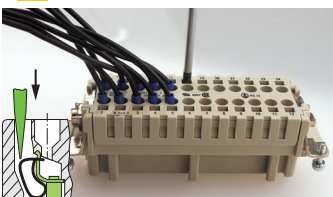
## 产品接线方式对比 Product wiring method

产品 Product	直插式 Quick lock terminal 24 inserts (公插 M+ 母插 F)	弹片压接 Cage-clamp terminal 24 inserts (公插 M+ 母插 F)	螺钉压接 Screw terminal 24 inserts (公插 M+ 母插 F)
接线耗时 Connection time	6 分钟 min	12.5 分钟 min	15 分钟 min

**1** 直插式弹片接线方式 Quick Lock terminal



**2** 普通弹片接线方式 Cage-clamp terminal



**3** 螺钉接线方式 Screw terminal

手工拧紧或电动螺丝刀拧紧，拧紧力不一致，导致螺丝没拧到位，同时在振动条件，螺丝有松脱可能。因为拧紧力度不一样，使用工具的不规范，容易导致十字螺丝头打滑，从而使产品报废，不适宜频繁更换线。同时如果采用手工拧紧，极大的增加了作业人员的劳动强度。

无线保护装置

Terminals without wire protection



有线保护装置

Terminals with wire protection

