

# HM-001、HM-001C 模块连接器 MODULAR CONNECTORS

额定电流 Rated current: 200 A 额定电压 Rated voltage: 1000 V

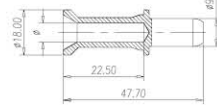
接线方式: 轴向压接 Termination methods: Axial screw terminal	型号 Type	产品系列 Series mm <sup>2</sup>	订货号 Part No.		尺寸图 Drawing (mm)
			公接插针 Male insert	母接插针 Female insert	
 M F	HM-001-MD	25-40	5140012663		
	HM-001-M	40-70	5140012662		
	HM-001-FD	25-40	5140012763		
	HM-001-F	40-70	5140012762		
接线方式: 冷压针压接 Termination methods: Crimp terminal (冷压针请单独订购 Order crimp contacts separately)	HM-001C-M		5140013001		
	HM-001C-F		5140013101		

## 200A 插针 Contacts

技术参数 Technical data

材质: 铜镀银 / 金  
Material: Copper, hard silver / gold plated  
接触电阻 Contact resistance:  $\leq 4\text{m}\Omega$   
接线形式: 冷压接线  
Termination methods: Crimp connection

200A 公插针 Male



线径 (mm <sup>2</sup> ) Wire gauge	Ø	接线长度 (mm) Stripping length	镀银冷压针 Crimp contacts, silver-plated 型号 Type	订货号 Part No.
25	7	22.5	CHM-25	3110006120
35	8.2	22.5	CHM-35	3110006121
50	10	22.5	CHM-50	3110006122
70	11.5	22.5	CHM-70	3110006123

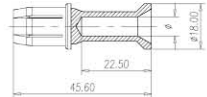
CHM



CHF



200A 母插针 Female



线径 (mm <sup>2</sup> ) Wire gauge	Ø	接线长度 (mm) Stripping length	镀银冷压针 Crimp contacts, silver-plated 型号 Type	订货号 Part No.
25	7	22.5	CHF-25	3110006220
35	8.2	22.5	CHF-35	3110006221
50	10	22.5	CHF-50	3110006222
70	11.5	22.5	CHF-70	3110006223

## 技术参数 Technical characteristics

### 1 插芯 Inserts

接插件针数 Inserts Number of contacts	1
依据 DIN EN 61984 的电气数据 Electrical data	
- 额定电流 Rated current	200A
- 额定电压 Rated voltage	1000V
- 额定脉冲电压 Rated impulse voltage	8kV
- 污染程度 Pollution degree	3
依据 UL/CSA 额定电压 Rated voltage	600V
绝缘电阻 Insulation resistance	$\geq 10^{10}\Omega$
材料 Material	聚碳酸酯 Polycarbonate
工作温度范围 Limiting temperatures	-40°C ...+125°C
依据 UL94 阻燃等级 Flammability	V0
可拔插次数 Mating cycles	$\geq 500$


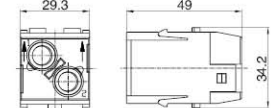

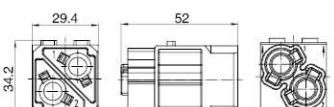
### 2 插针 Contacts

材料 Material	铜合金 Copper alloy
表面处理 Surface	镀银 Hard-silver plated
接触电阻 Contact resistance	$\leq 0.3\text{m}\Omega$
轴向螺栓连接 Axial screw terminal	
冷压连接 Crimp terminal	
- mm <sup>2</sup>	25-70 mm <sup>2</sup>
剥线长度	22.5 mm

# HM-002、HM-002C 模块连接器 MODULAR CONNECTORS



额定电流 Rated current: 100A 额定电压 Rated voltage: 1000V

接线方式: 轴向压接 Termination methods: Axial screw terminal	型号 Type	产品系列 Series mm <sup>2</sup>	订货号 Part No.		尺寸图 Drawing (mm)
			公接插针 Male insert	母接插针 Female insert	
 <p>M F</p>	HM-002-MD	10-25	5140022653		
	HM-002-M	16-35	5140022651		
	HM-002-FD	10-25	5140022753		
	HM-002-F	16-35	5140022751		
接线方式: 冷压针压接 Termination methods: Crimp terminal (冷压针请单独订购 Order crimp contacts separately)	HM-002C-M		5140023051		
	HM-002C-F		5140023151		

## 100A 插针 Contacts

技术参数 Technical data

材质: 铜镀银 / 金  
Material: Copper, hard silver / gold plated  
接触电阻 Contact resistance:  $\leq 1\text{m}\Omega$   
接线形式: 冷压接线  
Termination methods: Crimp connection

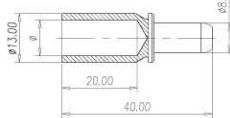
CNM



CNF

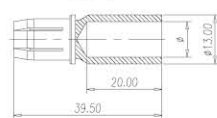


100A 公插针 Male



线径 (mm <sup>2</sup> ) Wire gauge	Ø	接线长度 (mm) Stripping length	镀银冷压针 Crimp contacts, silver-plated	
			型号 Type	订货号 Part No.
10	4.3	19	CNM-10	3110006114
16	5.5	19	CNM-16	3110006116
25	7	19	CNM-25	3110006125
35	8.2	19	CNM-35	3110006135

100A 母插针 Female



线径 (mm <sup>2</sup> ) Wire gauge	Ø	接线长度 (mm) Stripping length	镀银冷压针 Crimp contacts, silver-plated	
			型号 Type	订货号 Part No.
10	4.3	19	CNF-10	3110006214
16	5.5	19	CNF-16	3110006216
25	7	19	CNF-25	3110006225
35	8.2	19	CNF-35	3110006235

## 技术参数 Technical characteristics

### 1 插芯 Inserts

接插件针数 Inserts Number of contacts	2
依据 DIN EN 61984 的电气数据 Electrical data	
- 额定电流 Rated current	100A
- 额定电压 Rated voltage	1000V
- 额定脉冲电压 Rated impulse voltage	8kV
- 污染程度 Pollution degree	3
依据 UL/CSA 额定电压 Rated voltage	600V
绝缘电阻 Insulation resistance	$\geq 10^{10}\Omega$
材料 Material	聚碳酸酯 Polycarbonate
工作温度范围 Limiting temperatures	-40°C ... +125°C
依据 UL94 阻燃等级 Flammability	V0
可拔插次数 Mating cycles	$\geq 500$

### 2 插针 Contacts

材料 Material	铜合金 Copper alloy
表面处理 Surface	镀银 Hard-silver plated
接触电阻 Contact resistance	$\leq 0.3\text{m}\Omega$
电缆绞线依据 IEC 60 228-5	
轴向螺栓连接 Axial screw terminal	
- mm <sup>2</sup>	10-38 mm <sup>2</sup>
- AWG	6-2
- 内六角扳手 Hexagonal driver	SW 4
- 剥线长度 Stripping length	13 mm
- 拧紧力矩 Tightening torque	
- mm <sup>2</sup>	10 16 25 35
- AWG	6 6 7 8
冷压连接 Crimp terminal	
- mm <sup>2</sup>	10-35 mm <sup>2</sup>