

KEL 电缆引入系统 CABLE ENTRY SYSTEMS

可拆卸式穿墙板 – 固定线径模块

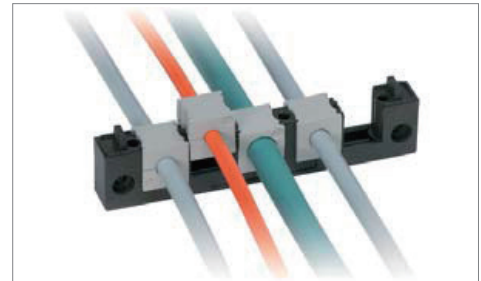
产品描述 Product description

KEL 系列的电缆引入框架尤其适用于标准工业连接器的开口尺寸。这种可分开电缆引入框架将电缆引入并固定在电缆引入框架中。这种灵活性的电缆引入框架非常适用于有端子的电缆引入。

The KEL matches exactly the cut-out dimensions standard industrial connectors.

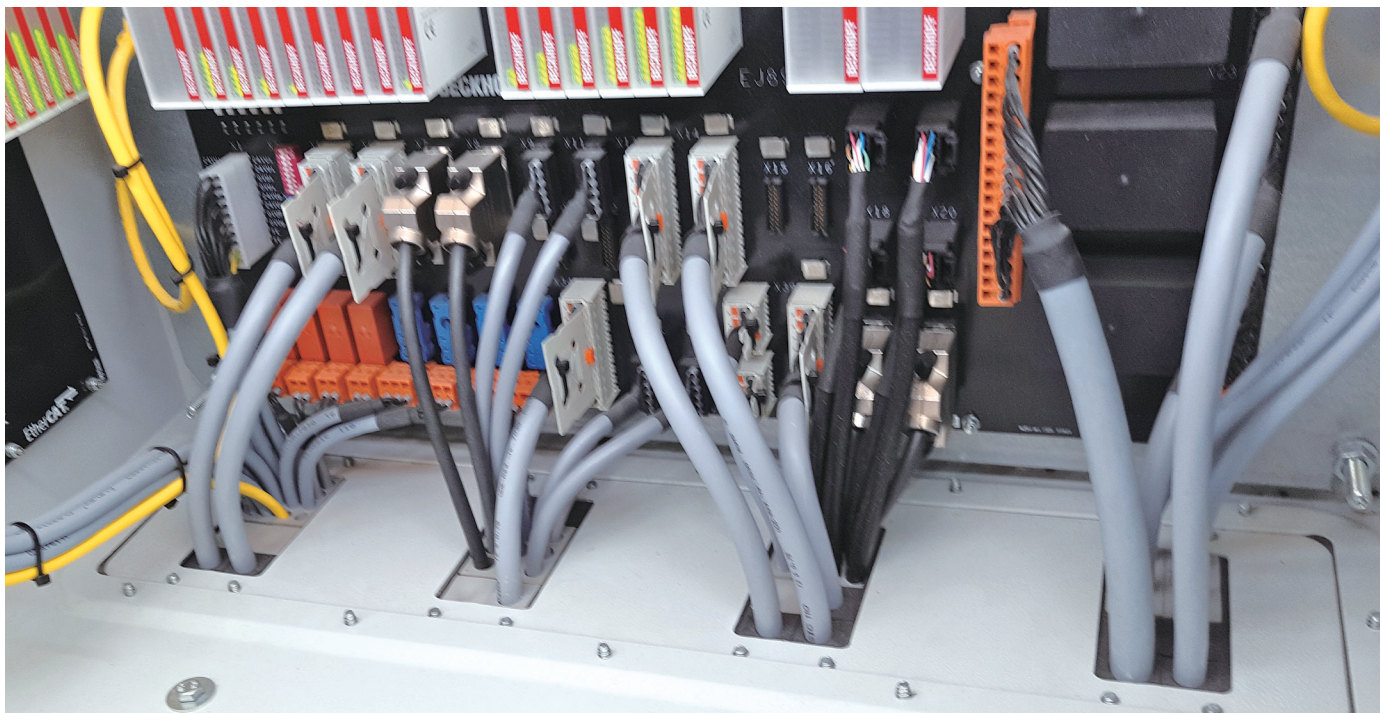
The split insert matching the cable diameter is placed around the cable and inserted into the cable entry frame.

This flexibility is perfect for pre-terminated cables.

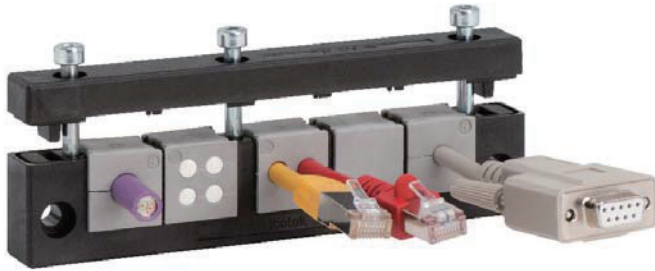


优势 Benefits

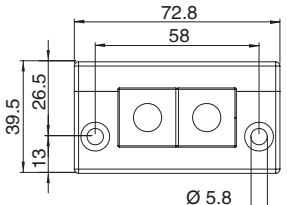
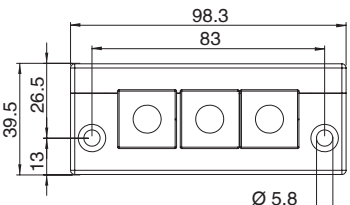
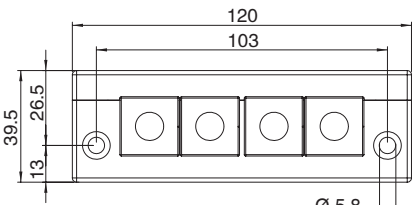
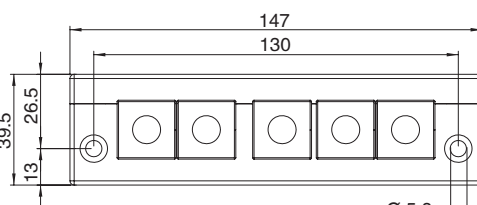
- 1、端头的电缆组件的品质得以保证
Warranty of pre-terminated cables remains
- 2、系统升级改造和维护可以变得简单快速
Retrofitting and maintenance can be carried out easily and quickly
- 3、很高的安装密度，广泛的电缆穿芯型号可供选择
High packing density, wide variety of frames and inserts
- 4、张紧力按照 EN 50262 / 62444 标准设计
Strain relief according DIN EN 50262
- 5、防震 Shockproof



KEL E 可开式穿墙板



可分开穿芯 Split inserts

框架型号 Type	示意图 Description	开孔尺寸 (mm) Platemounting dimensions	KT 模块数量 Inserts 小 small / 大 large
<p>KEL-E2</p> <p>框架订货号 Part No. 99040602</p> <p>模块规格见 9.3.9-9.3.14 页 See page 9.3.9-9.3.14 module specifications</p>		43 × 24	2 -
<p>KEL-E3</p> <p>框架订货号 Part No. 99041103</p> <p>模块规格见 9.3.9-9.3.14 页 See page 9.3.9-9.3.14 module specifications</p>		65 × 24	3 -
<p>KEL E4</p> <p>框架订货号 Part No. 99041604</p> <p>模块规格见 9.3.9-9.3.14 页 See page 9.3.9-9.3.14 module specifications</p>		86 × 24	4 -
<p>KEL E5</p> <p>框架订货号 Part No. 99042405</p> <p>模块规格见 9.3.9-9.3.14 页 See page 9.3.9-9.3.14 module specifications</p>		112 × 24	5 -

材料 Material: 聚酰胺 Polyamide (PA)

阻燃等级 Flame class: UL94-V0, 自熄灭 Self-extinguishing

防护等级 Protection degree: IP54, 使用密封垫且正确选择穿芯规格 (符合 DIN EN 60529:2000-09)

With gasket and correct selection of the cable inserts

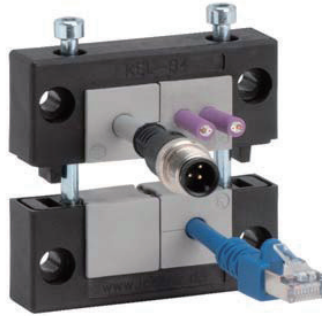
温度范围 Temperature: - 40°C to + 140°C (静态 Static)

特性 Properties: 无卤, 无硅 Halogen-free, silicone-free

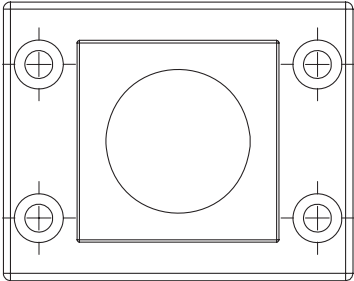
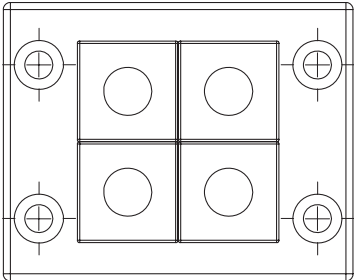
KEL 高度 Height: 17 mm

KEL 电缆引入系统 CABLE ENTRY SYSTEMS

KEL 6 可开式穿墙板

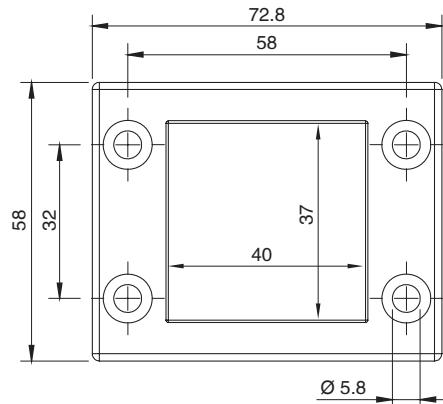


可分开穿芯 Split inserts

框架型号 Type	示意图 Description	KT 模块数量 Inserts 小 small / 大 large
<p>KEL - 6/1</p> <p>框架订货号 Part No. 99040601</p> <p>模块规格见 9.3.9-9.3.14 页 See page 9.3.9-9.3.14 module specifications</p>		<p>- / 1</p>
<p>KEL - 6/4</p> <p>框架订货号 Part No. 99040604</p> <p>模块规格见 9.3.9-9.3.14 页 See page 9.3.9-9.3.14 module specifications</p>		<p>4 / -</p>

材料 Material: 聚酰胺 Polyamide (PA)
 阻燃等级 Flame class: UL94-V0, 自熄灭 Self-extinguishing
 防护等级 Protection degree: IP54, 使用密封垫且正确选择穿芯规格
 (符合 DIN EN 60529:2000-09)
 With gasket and correct selection of
 the cable inserts
 温度范围 Temperature: -40°C to +140°C (静态 Static)
 特性 Properties: 无卤, 无硅 Halogen-free, silicone-free
 开孔尺寸 Cut-out dimensions: 37 × 40 mm
 KEL 高度 Height: 17 mm

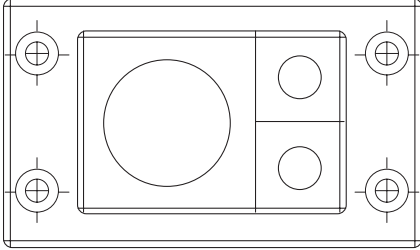
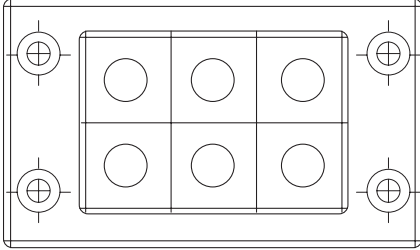
开孔尺寸 Platemounting dimensions



KEL 10 可开式穿墙板

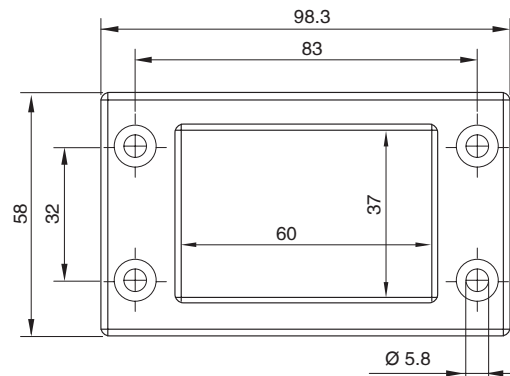


可分开穿芯 Split inserts

框架型号 Type	示意图 Description	KT 模块数量 Inserts 小 small / 大 large
<p>KEL - 10/3</p> <p>框架订货号 Part No. 99041003</p> <p>模块规格见 9.3.9-9.3.14 页 See page 9.3.9-9.3.14 module specifications</p>		<p>2 / 1</p>
<p>KEL - 10/6</p> <p>框架订货号 Part No. 99041006</p> <p>模块规格见 9.3.9-9.3.14 页 See page 9.3.9-9.3.14 module specifications</p>		<p>6 / -</p>

材料 Material: 聚酰胺 Polyamide (PA)
 阻燃等级 Flame class: UL94-V0, 自熄灭 Self-extinguishing
 防护等级 Protection degree: IP54, 使用密封垫且正确选择穿芯规格
 (符合 DIN EN 60529:2000-09)
 With gasket and correct selection of
 the cable inserts
 温度范围 Temperature: - 40°C to + 140°C (静态 Static)
 特性 Properties: 无卤, 无硅 Halogen-free, silicone-free
 开孔尺寸 Cut-out dimensions: 37 × 60 mm

开孔尺寸 Platemounting dimensions

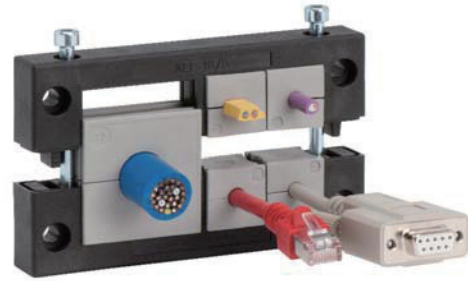


KEL 电缆引入系统 CABLE ENTRY SYSTEMS

KEL 16 可开式穿墙板



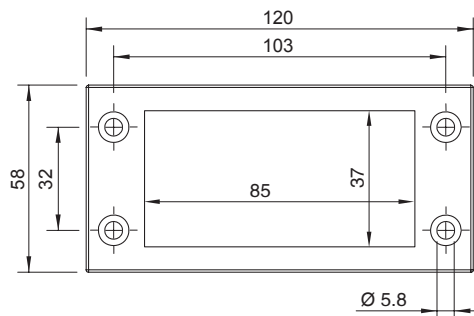
可分开穿芯 Split inserts



框架型号 Type	示意图 Description	KT 模块数量 Inserts 小 small / 大 large
<p>KEL 16/8</p> <p>框架订货号 Part No. 99042168</p> <p>模块规格见 9.3.9-9.3.14 页 See page 9.3.9-9.3.14 module specifications</p>		8 / -
<p>KEL 16/5</p> <p>框架订货号 Part No. 99042165</p> <p>模块规格见 9.3.9-9.3.14 页 See page 9.3.9-9.3.14 module specifications</p>		4 / 1
<p>KEL 16/4</p> <p>框架订货号 Part No. 99042164</p> <p>模块规格见 9.3.9-9.3.14 页 See page 9.3.9-9.3.14 module specifications</p>		4 / -
<p>KEL 16/2</p> <p>框架订货号 Part No. 99042162</p> <p>模块规格见 9.3.9-9.3.14 页 See page 9.3.9-9.3.14 module specifications</p>		- / 2

材料 Material: 聚酰胺 Polyamide (PA)
 阻燃等级 Flame class: UL94-V0, 自熄灭 Self-extinguishing
 防护等级 Protection degree: IP54, 使用密封垫且正确选择穿芯规格
 (符合 DIN EN 60529:2000-09)
 With gasket and correct selection of
 the cable inserts
 温度范围 Temperature: -40°C to +140°C (静态 Static)
 特性 Properties: 无卤, 无硅 Halogen-free, silicone-free
 开孔尺寸 Cut-out dimensions: 37 × 85 mm
 KEL 高度 Height: 17 mm

开孔尺寸 Platemounting dimensions

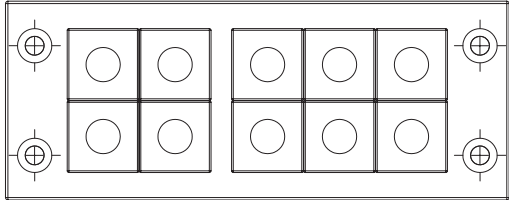
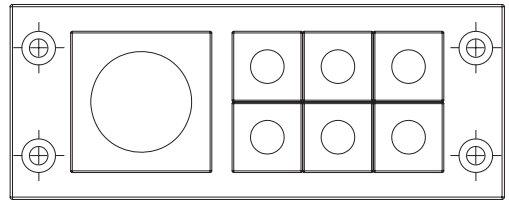
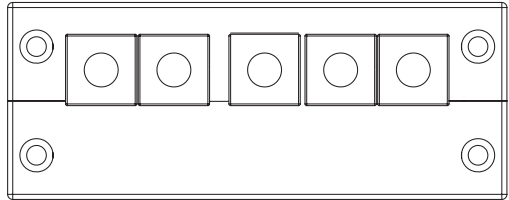
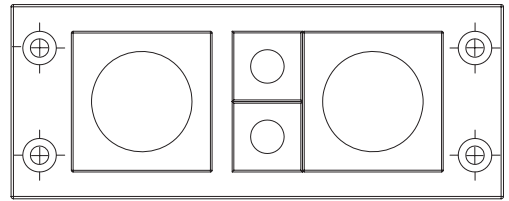


KEL 24 可开式穿墙板



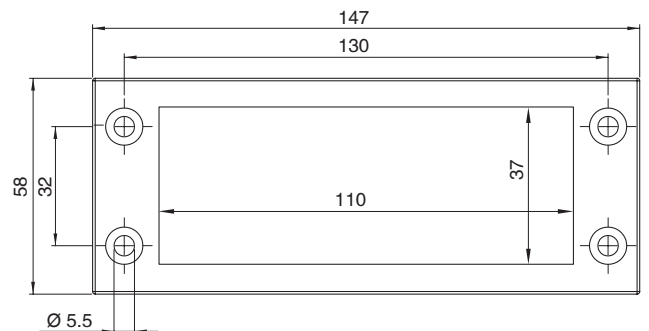
可分开穿芯 Split inserts



框架型号 Type	示意图 Description	KT 模块数量 Inserts 小 small / 大 large
<p>KEL 24/10</p> <p>框架订货号 Part No. 99042241</p> <p>模块规格见 9.3.9-9.3.14 页 See page 9.3.9-9.3.14 module specifications</p>		10 / -
<p>KEL 24/7</p> <p>框架订货号 Part No. 99042247</p> <p>模块规格见 9.3.9-9.3.14 页 See page 9.3.9-9.3.14 module specifications</p>		6 / 1
<p>KEL 24/5</p> <p>框架订货号 Part No. 99042248</p> <p>模块规格见 9.3.9-9.3.14 页 See page 9.3.9-9.3.14 module specifications</p>		5 / -
<p>KEL 24/4</p> <p>框架订货号 Part No. 99042244</p> <p>模块规格见 9.3.9-9.3.14 页 See page 9.3.9-9.3.14 module specifications</p>		2 / 2

材料 Material: 聚酰胺 Polyamide (PA)
 阻燃等级 Flame class: UL94-V0, 自熄灭 Self-extinguishing
 防护等级 Protection degree: IP54, 使用密封垫且正确选择穿芯规格
 (符合 DIN EN 60529:2000-09)
 With gasket and correct selection of
 the cable inserts
 温度范围 Temperature: - 40°C to + 140°C (静态 Static)
 特性 Properties: 无卤, 无硅 Halogen-free, silicone-free
 开孔尺寸 Cut-out dimensions: 37 × 110 mm
 KEL 高度 Height: 17 mm

开孔尺寸 Platemounting dimensions



KEL 电缆引入系统 CABLE ENTRY SYSTEMS

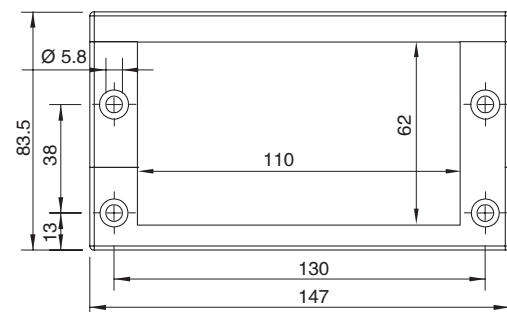
KEL 24-E 可开式穿墙板



框架型号 Type	示意图 Description	KT 模块数量 Inserts 小 small / 大 large
<p>KEL 24/15-E</p> <p>框架订货号 Part No. 99042209</p> <p>模块规格见 9.3.9-9.3.14 页 See page 9.3.9-9.3.14 module specifications</p>		15 / -
<p>KEL 24/12-E</p> <p>框架订货号 Part No. 99042208</p> <p>模块规格见 9.3.9-9.3.14 页 See page 9.3.9-9.3.14 module specifications</p>		11 / 1
<p>KEL 24/9-E</p> <p>框架订货号 Part No. 99042207</p> <p>模块规格见 9.3.9-9.3.14 页 See page 9.3.9-9.3.14 module specifications</p>		7 / 2

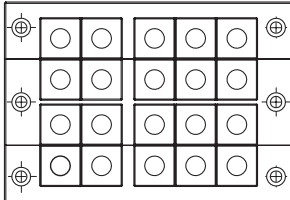
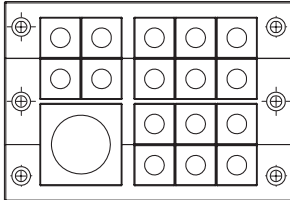
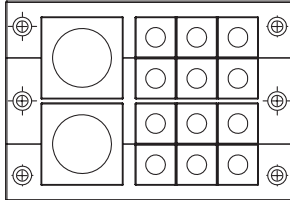
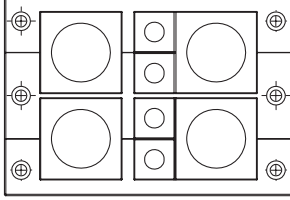
材料 Material: 聚酰胺 Polyamide (PA)
 阻燃等级 Flame class: UL94-V0, 自熄灭 Self-extinguishing
 防护等级 Protection degree: IP54, 使用密封垫且正确选择穿芯规格
 (符合 DIN EN 60529:2000-09)
 With gasket and correct selection of
 the cable inserts
 温度范围 Temperature: -40°C to +140°C (静态 Static)
 特性 Properties: 无卤, 无硅 Halogen-free, silicone-free
 开孔尺寸 Cut-out dimensions: 62 × 110 mm
 KEL 高度 Height: 17 mm

开孔尺寸 Platemounting dimensions



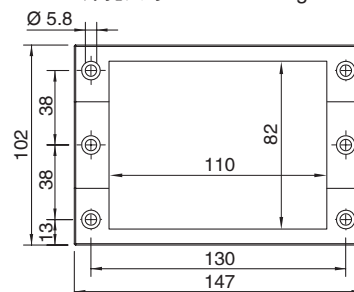
KEL 24-MT 可开式穿墙板



框架型号 Type	示意图 Description	KT 模块数量 Inserts 小 small / 大 large
<p>KEL24/20-MT</p> <p>框架订货号 Part No. 99042232</p> <p>模块规格见 9.3.9-9.3.14 页 See page 9.3.9-9.3.14 module specifications</p>		20 / -
<p>KEL24/17-MT</p> <p>框架订货号 Part No. 99042224</p> <p>模块规格见 9.3.9-9.3.14 页 See page 9.3.9-9.3.14 module specifications</p>		16 / 1
<p>KEL 24/14-MT</p> <p>框架订货号 Part No. 99042225</p> <p>模块规格见 9.3.9-9.3.14 页 See page 9.3.9-9.3.14 module specifications</p>		12 / 2
<p>KEL 24/8-MT</p> <p>框架订货号 Part No. 99042221</p> <p>模块规格见 9.3.9-9.3.14 页 See page 9.3.9-9.3.14 module specifications</p>		4 / 4

材料 Material: 聚酰胺 Polyamide (PA)
 阻燃等级 Flame class: UL94-V0, 自熄灭 Self-extinguishing
 防护等级 Protection degree: IP54, 使用密封垫且正确选择穿芯规格
 (符合 DIN EN 60529:2000-09)
 With gasket and correct selection of
 the cable inserts
 温度范围 Temperature: - 40°C to + 140°C (静态 Static)
 特性 Properties: 无卤, 无硅 Halogen-free, silicone-free
 开孔尺寸 Cut-out dimensions: 82 × 110 mm
 KEL 高度 Height: 17 mm

开孔尺寸 Platemounting dimensions



KEL 电缆引入系统 CABLE ENTRY SYSTEMS

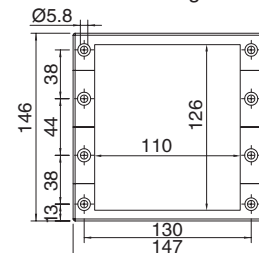
KEL 24-2MT 可开式穿墙板



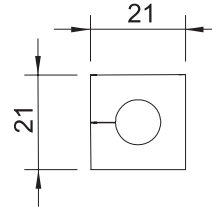
框架型号 Type	示意图 Description	KT 模块数量 Inserts 小 small / 大 large
KEL 24/30-2 MT 框架订货号 Part No. 99042234 模块规格见 9.3.9-9.3.14 页 See page 9.3.9-9.3.14 module specifications		30 / -
KEL 24/27-2 MT 框架订货号 Part No. 99042233 模块规格见 9.3.9-9.3.14 页 See page 9.3.9-9.3.14 module specifications		26 / 1
KEL 24/24-2 MT 框架订货号 Part No. 99042227 模块规格见 9.3.9-9.3.14 页 See page 9.3.9-9.3.14 module specifications		22 / 2
KEL 24/21-2 MT 框架订货号 Part No. 99042226 模块规格见 9.3.9-9.3.14 页 See page 9.3.9-9.3.14 module specifications		18 / 3
KEL 24/12-2 MT 框架订货号 Part No. 99042223 模块规格见 9.3.9-9.3.14 页 See page 9.3.9-9.3.14 module specifications		6 / 6

材料 Material: 聚酰胺 Polyamide (PA)
 阻燃等级 Flame class: UL94-V0, 自熄灭 Self-extinguishing
 防护等级 Protection degree: IP54, 使用密封垫且正确选择穿芯规格 (符合 DIN EN 60529:2000-09)
 With gasket and correct selection of the cable inserts
 温度范围 Temperature: -40°C to +140°C (静态 Static)
 特性 Properties: 无卤, 无硅 Halogen-free, silicone-free
 开孔尺寸 Cut-out dimensions: 126 × 110 mm
 KEL 高度 Height: 17 mm

开孔尺寸 Platemounting dimensions



KT 模块 (小) Inserts, small

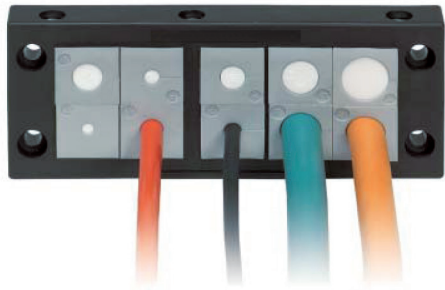


材料 Material: 合成橡胶 Elastomer
 阻燃等级 Flame class: UL94-V0, 自熄灭 Self-extinguishing
 防护等级 Protection degree: IP65
 温度范围 Temperature: - 40°C to + 90°C (静态 Static)
 特性 Properties: 无卤, 无硅 Halogen-free, silicone-free

示意图 Description	型号 Type	订货号 Part No. 灰色 Grey	夹紧范围 Clamping range
BTK 	BTK	99041251	无
KT (小) 	KT 2	99039934	2-3 mm
	KT 3	99041203	3-4 mm
	KT 4	99041204	4-5 mm
	KT 5	99041205	5-6 mm
	KT 6	99041206	6-7 mm
	KT 7	99041207	7-8 mm
	KT 8	99041208	8-9 mm
	KT 9	99041209	9-10 mm
	KT 10	99041210	10-11 mm
	KT 11	99041211	11-12 mm
	KT 12	99041212	12-13 mm
	KT 13	99041213	13-14 mm
	KT 14	99041214	14-15 mm
	KT 15	99041215	15-16 mm
	KTs 16	99039901	16 mm
	KT 2/x 	KT 2/3	99039939
KT 2/4		99039906	2×ø4mm
KT 2/5		99041200	2×ø5mm
KT 2/6		99041201	2×ø6mm
KT 2/7		99041202	2×ø7mm
KT 2/8		99039917	2×ø8mm
KT 4/x 	KT 4/3	99039914	4×ø3mm
	KT 4/4	99039909	4×ø4mm
	KT 4/5	99039908	4×ø5mm
	KT 4/6	99039932	4×ø6mm

KEL 电缆引入系统 CABLE ENTRY SYSTEMS

ST 模块堵头 Plugs (用于 KT/KTMB 模块)



材料 Material: 聚酰胺 Polyamide (PA), 白色 White
 阻燃等级 Flame class: UL94-V0, 自熄灭 Self-extinguishing
 温度范围 Temperature: - 40°C to + 120°C
 特性 Properties: 无卤, 无硅 Halogen-free, silicone-free

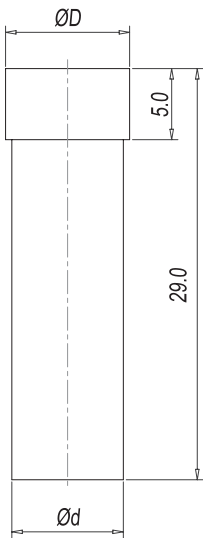
示意图 Description

型号 Type

订货号 Part No.

直径
Diameter (ØD)

直径
Diameter (Ød)



ST2

99042909

3.0 mm

2.0 mm

ST3

99042901

4.0 mm

3.0 mm

ST4

99042908

5.0 mm

4.0 mm

ST5

99042906

6.9 mm

5.2 mm

ST6

99042903

6.9 mm

6.9 mm

ST7

99042905

8.0 mm

7.0 mm

ST8

99042899

9.0 mm

8.0 mm

ST9

99042897

10.0 mm

9.0 mm

ST10

99042895

11.0 mm

10.0 mm

ST11

99042893

12.0 mm

11.0 mm

ST12

99042891

13.0 mm

12.0 mm

ST13

99042889

14.0 mm

13.0 mm

ST14

99042887

15.0 mm

14.0 mm

ST15

99042885

16.0 mm

15.0 mm

ST16

99042883

17.0 mm

16.0 mm

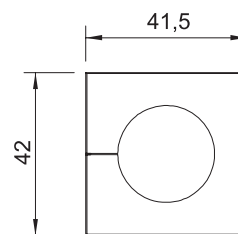
ST17

99042881



18.0 mm

17.0 mm

KT 模块 (大) Inserts, large

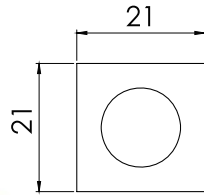


材料 Material: 合成橡胶 Elastomer
 阻燃等级 Flame class: UL94-V0, 自熄灭 Self-extinguishing
 防护等级 Protection degree: IP65
 温度范围 Temperature: - 40°C to + 90°C (静态 Static)
 特性 Properties: 无卤, 无硅 Halogen-free, silicone-free

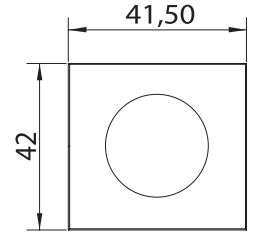
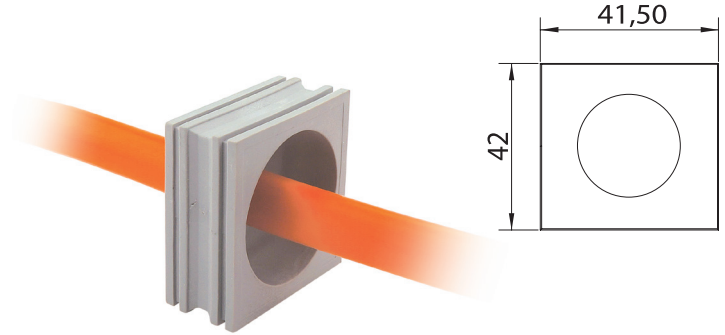
示意图 Description	型号 Type	订货号 Part No. 灰色 Grey	夹紧范围 Clamping range
ATG 	ATG	99041253	适配器插入
BTG 	BTG	99041252	填充块
KT (大) 	KT 16 KT 17 KT 18 KT 19 KT 20 KT 21 KT 22 KT 23 KT 24 KT 25 KT 26 KT 27 KT 28 KT 29 KT 30 KT 31 KT 32 KT 33 KT 34	99041216 99041217 99041218 99041219 99041220 99041221 99041222 99041223 99041224 99041225 99041226 99041227 99041228 99041229 99041230 99041231 99041232 99041233 99041234	16-17 mm 17-18 mm 18-19mm 19-20 mm 20-21 mm 21-22mm 22-23 mm 23-24 mm 24-25mm 25-26 mm 26-27 mm 27-28mm 28-29 mm 29-30 mm 30-31 mm 31-32 mm 32-33 mm 33-34 mm 34-35 mm

KEL 电缆引入系统 CABLE ENTRY SYSTEMS

KTB 模块 Inserts



小模块 Inserts, small

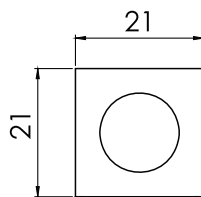


大模块 Inserts, large

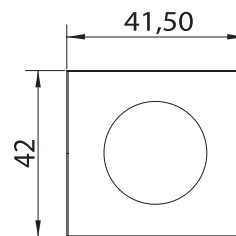
示意图 Description	型号 Type	订货号 Part No. 灰色 Grey	夹紧范围 Clamping range
小模块			
 KTP-D	KTP-A	99042565	2.5 - 6.5 mm
	KTP-B	99040475	4 - 7.5 mm
	KTP-C	99046510	6.5 - 10 mm
 横截面 KDP	KTP-D	99049513	9.5 - 13 mm
	KTP-E	99041316	13 - 16 mm
大模块			
 KTB-B	KTB-A	99041318	13 - 18 mm
	KTB-B	99041823	18 - 23 mm
 KTB-C	KTB-C	99042328	23 - 28 mm
	KTB-D	99042833	28 - 33 mm

材料 Material: 合成橡胶 Elastomer
 阻燃等级 Flame class: UL94-V0, 自熄灭 Self-extinguishing
 防护等级 Protection degree: IP65
 温度范围 Temperature: - 40°C to + 90°C (静态 Static)
 特性 Properties: 无卤 Halogen-free

KT-DPF 多孔径穿芯 Multi-aperture core



小模块尺寸图



大模块尺寸图

示意图 Description	型号 Type	订货号 Part No. 灰色 Grey	夹紧范围 Clamping range
小模块  KT-DPF-A	KT-DPF-A	99041260	3 - 12 mm
大模块  KT-DPF-B	KT-DPF-B	99041261	4 - 18 mm
 KT-DPF-C	KT-DPF-C	99041262	14 - 26 mm

材料 Material: 合成橡胶 Elastomer

阻燃等级 Flame class: UL94-V0, 自熄灭 Self-extinguishing

防护等级 Protection degree: IP65

温度范围 Temperature: - 40°C to + 90°C (静态 Static)

特性 Properties: 无卤, 无硅 Halogen-free, silicone-free

KEL 电缆引入系统 CABLE ENTRY SYSTEMS

DT 电缆引入穿芯 Cable entry inserts

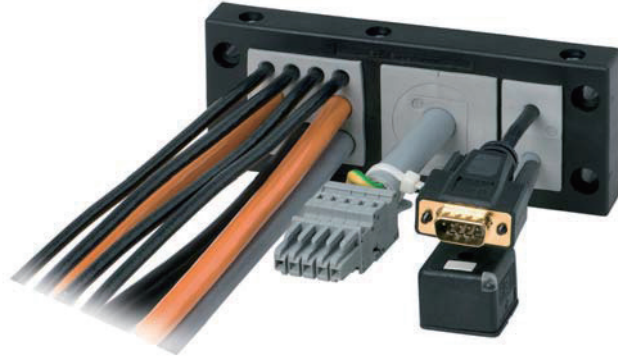


示意图 Description	型号 Type	订货号 Part No. 灰色 Grey	夹紧范围 Clamping range
	DT 1	99041500	12 x max. 6.5 mm 2 x max. 12.2 mm
	DT 2	99041510	16 x max. 7.1 mm
	DT 3	99041520	4 x max. 6.5 mm 3 x max. 9.5 mm 3 x max. 11.3 mm
	DT 4	99041530	9 x max. 9.5 mm

材料 Material: 合成橡胶 Elastomer

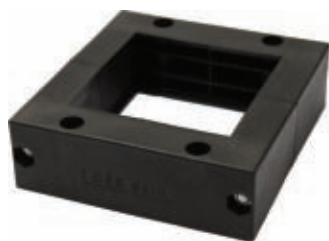
阻燃等级 Flame class: UL94-V0, 自熄灭 Self-extinguishing

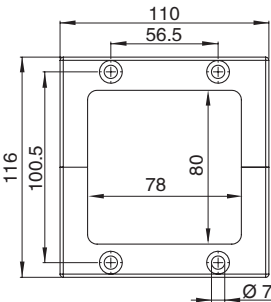
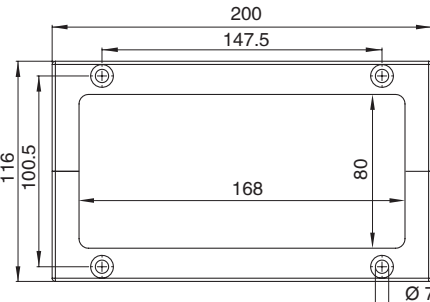
防护等级 Protection degree: IP54

温度范围 Temperature: - 40°C to + 90°C (静态 Static)

特性 Properties: 无卤, 无硅 Halogen-free, silicone-free

KEL 64 大线径密封框架



型号 Type	示意图 Description	订货号 Patr No.	尺寸 Designation (mm) 宽 Length x 长 Width x 高 Height
KEL- 64 / 1		99046401	110 x 116 x 35
KEL- 64 / 2		99046402	200 x 116 x 35

材料 Material: 聚酰胺 Polyamide (PA)

阻燃等级 Flame class: UL94-V0, 自熄灭 Self-extinguishing

防护等级 Protection degree: IP54

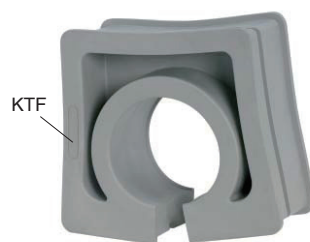
温度范围 Temperature: - 40°C to + 140°C (静态 Static)

特性 Properties: 无卤, 无硅 Halogen-free, silicone-free

开孔尺寸 Cut-out dimensions: 圆形, 电缆直径 Round, cable diameter +15%

KEL 电缆引入系统 CABLE ENTRY SYSTEMS

KEL-NRG 标准波纹管



型号 Type	订货号 Patr No.	线径 Clamping range
KTF 00	99040000	盲孔穿芯 Blind Insert
KTF 34	99043400	33 - 36 mm
KTF 38	99043800	36 - 39 mm
KTF 42	99044200	41 - 44 mm
KTF 54	99045400	53 - 56 mm

材料 Material: 合成橡胶 Elastomer

阻燃等级 Flame class: UL94-V0, 自熄灭 Self-extinguishing

防护等级 Protection degree: IP54

温度范围 Temperature: - 40°C to + 90°C (静态 Static)

特性 Properties: 无卤, 无硅 Halogen-free, silicone-free

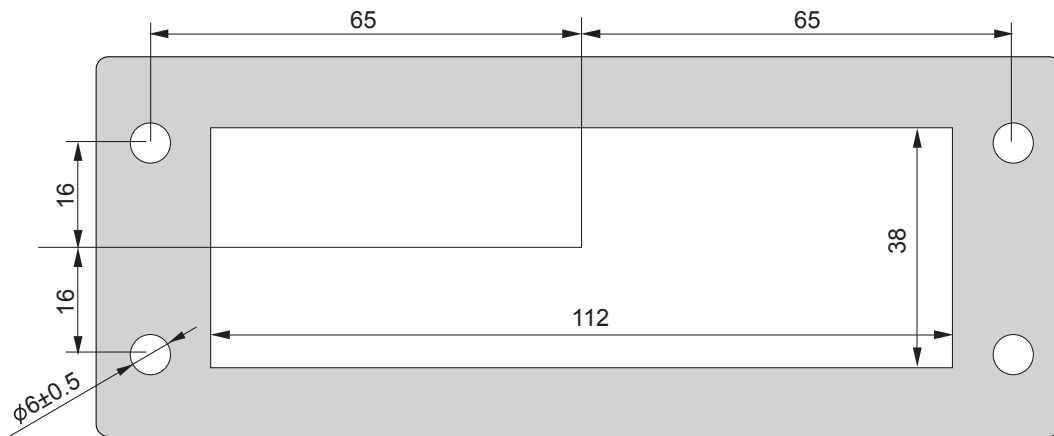
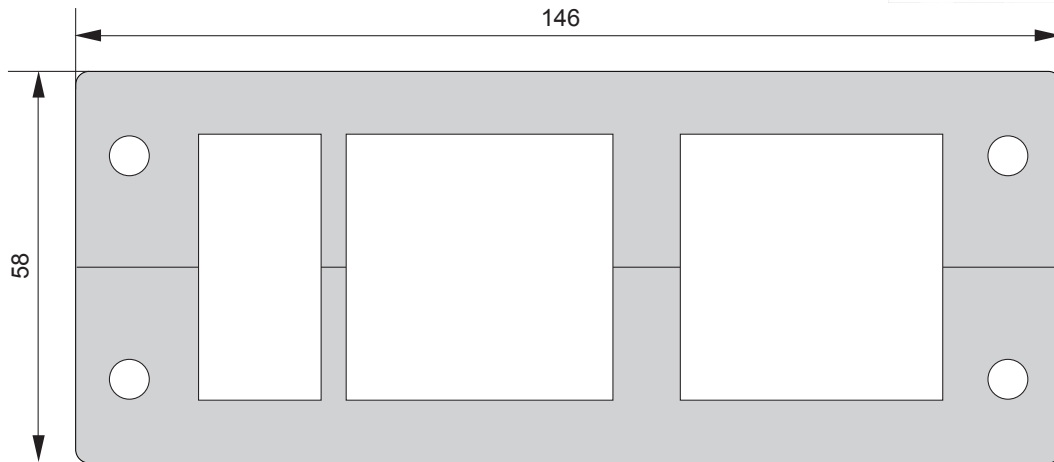


KEL 电缆引入系统 CABLE ENTRY SYSTEMS



KEL 24 可开式穿墙板 (可变径模块) Cable entry frames

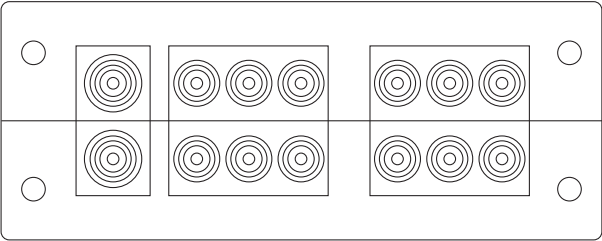
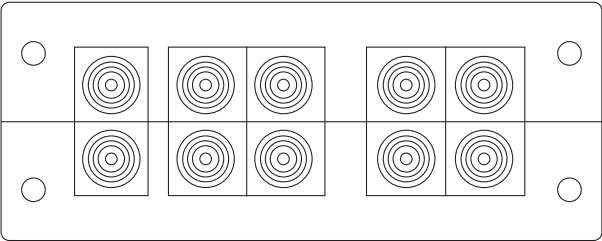
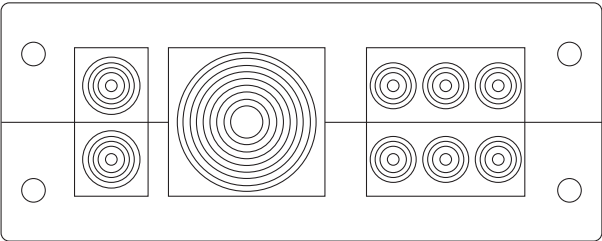
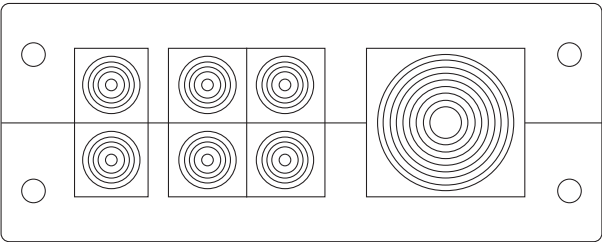
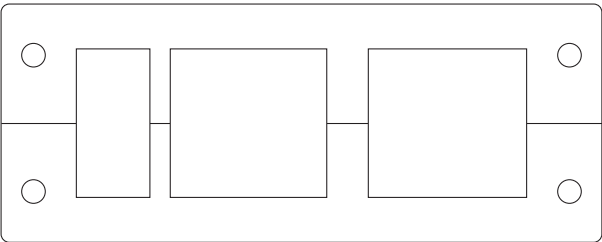
材料 Material	改进型尼龙 halogen-free, silicone-free 66
颜色 Color	黑色 black
温度 Temperature	-40°C to + 120°C
防护等级 Protection degree	IP65
阻燃特性 Flame class	阻燃等级 flammability acc. to UL94 V0
应用场合 Suitable for situations	电力控制柜、通讯控制柜、机床控制柜、自动化设备、电源柜等需要电缆引入引出场合。 Electric control cabinet, communication, machine tool control cabinet, automation equipment, power supply cabinet need cable entry which leads to the occasion.



开孔尺寸 Size

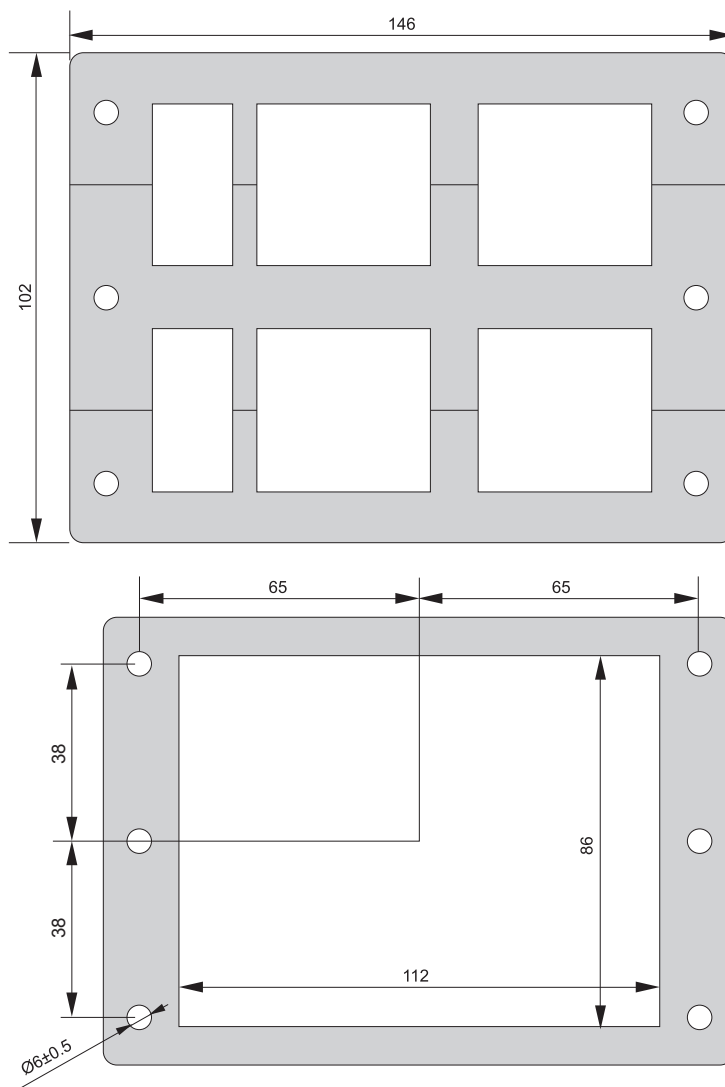
品名 Identification	型号 Type	夹紧范围 Clamping range mm	模块数量 Inserts	安装厚度 mm Installation height	订货号 Part No.
框架	KEL 24	—	—	24	97000000
可变径模块	CM20×20	3-16	0-10	—	97202010
	CM20×40	3-14	0-10	—	97204010
	CM40	16-29	0-2	—	97404010

KEL 电缆引入系统 CABLE ENTRY SYSTEMS

型号 Type	示意图 Description	CM20 × 20 (mm)	CM40 × 40 (mm)	CM20 × 40 (mm)	电缆根数 Inserts cable
		数量 Number	数量 Number	数量 Number	
KEL 24/14C 订货号 Part No. 97020400		2	/	4	14
KEL 24/10C 订货号 Part No. 97100000		10	/	/	10
KEL 24/9C 订货号 Part No. 97020401		2	1	2	9
KEL 24/7C 订货号 Part No. 97060001		6	1	/	7
KEL 24/(XX)C		A	B	C	A × 1+ B × 1+ C × 3

KEL 48 可开式穿墙板 Cable entry frames

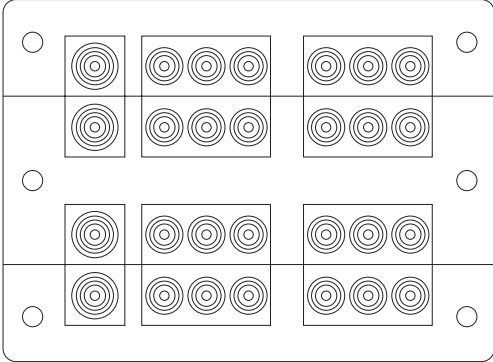
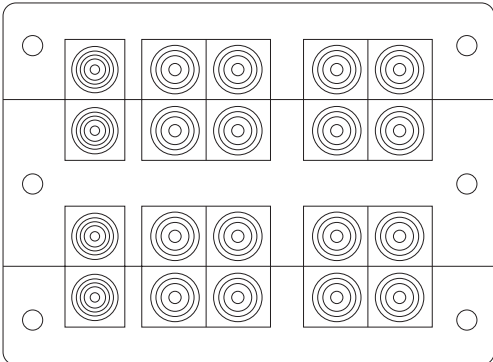
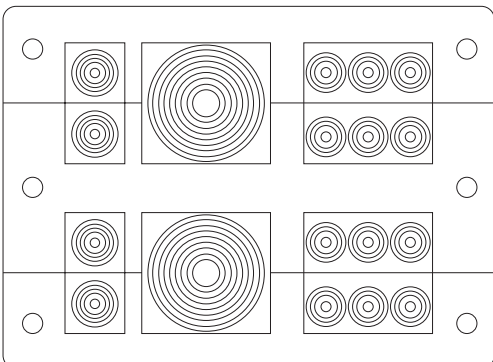
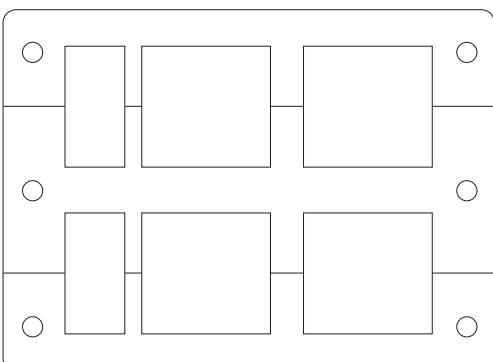
材料 Material	改进型尼龙 halogen-free, silicone-free 66
颜色 Color	黑色 black
温度 Temperature	-40°C to +120°C
防护等级 Protection degree	IP65
阻燃特性 Flame class	阻燃等级 flammability acc. to UL94 V0
应用场合 Suitable for situations	电力控制柜、通讯控制柜、机床控制柜、自动化设备、电源柜等需要电缆引入引出场合。 Electric control cabinet, communication, machine tool control cabinet, automation equipment, power supply cabinet need cable entry which leads to the occasion.



开孔尺寸 Size

品名 Identification	型号 Type	夹紧范围 Clamping range mm	模块数量 Inserts	安装厚度 mm Installation height	订货号 Part No.
框架	KEL 48	—	—	24	98000000
可变径模块	CM20×20	3-16	0-20	—	97202010
	CM20×40	3-14	0-20	—	97204010
	CM40	16-29	0-4	—	97404010

KEL 电缆引入系统 CABLE ENTRY SYSTEMS

型号 Type	示意图 Description	数量 Number			电缆根数 Inserts cable
		CM20 × 20 (mm)	CM40 × 40 (mm)	CM20 × 40 (mm)	
KEL 48/28C 订货号 Part No. 98040800		4	/	8	28
KEL 48/20C 订货号 Part No. 98200000		20	/	/	20
KEL 48/18C 订货号 Part No. 98040402		4	2	4	18
KEL 48/(XX)C		A	B	C	A × 1+ B × 1+ C × 3

KEL 电缆引入系统