
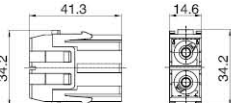
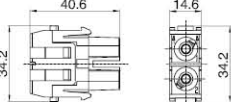
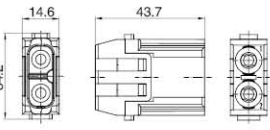



HM-S02、HM-S02C 模块连接器 MODULAR CONNECTORS

额定电流 Rated current: 40A 额定电压 Rated voltage: 1000V

接线方式: 轴向压接 Termination methods: Axial screw terminal	型号 Type	产品系列 Series mm ²	订货号 Part No.		尺寸图 Drawing (mm)
			公接插针 Male insert	母接插针 Female insert	
 M F	HM-S02-MD	2.5-8	5140022601		 M
	HM-S02-M	6-10	5140022602		
	HM-S02-FD	2.5-8	5140022701		 F
	HM-S02-F	6-10	5140022702		
接线方式: 冷压针压接 Termination methods: Crimp terminal (冷压针请单独订购 Order crimp contacts separately)	HM-S02C-M		5140023002		 M
 M F	HM-S02C-F		5140023102		

40A 插针 Contacts

技术参数 Technical data

材质: 铜镀银 / 金

Material: Copper, hard silver / gold plated

接触电阻 Contact resistance: $\leq 4\text{m}\Omega$

接线形式: 冷压接线

Termination methods: Crimp connection

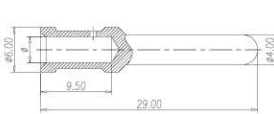
CMM



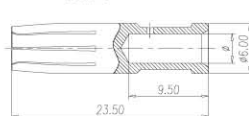
CMF



40A 公插针 Male



40A 母插针 Female



线径 (mm ²) Wire gauge	接线长度 (mm) Stripping length		镀银冷压针 Crimp contacts, silver-plated	
			型号 Type	订货号 Part No.
1.5	AWG16	8.0mm	CMM-1.5	3320006104
2.5	AWG14	8.0mm	CMM-2.5	3320006105
4.0	AWG12	8.0mm	CMM-4.0	3320006107
6.0	AWG10	8.0mm	CMM-6.0	3320006108
10.0	AWG7	8.0mm	CMM-10	3320006109

线径 (mm ²) Wire gauge	接线长度 (mm) Stripping length		镀银冷压针 Crimp contacts, silver-plated	
			型号 Type	订货号 Part No.
1.5	AWG16	8.0mm	CMF-1.5	3320006204
2.5	AWG14	8.0mm	CMF-2.5	3320006205
4.0	AWG12	8.0mm	CMF-4.0	3320006207
6.0	AWG10	8.0mm	CMF-6.0	3320006208
10.0	AWG7	8.0mm	CMF-10	3320006209

技术参数 Technical characteristics

1 插芯 Inserts


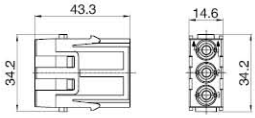
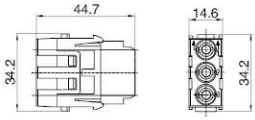
接插件针数 Inserts/Number of contacts	2
依据 DIN EN 61984 的电气数据 Electrical data	
- 额定电流 Rated current	40A
- 额定电压 Rated voltage	1000V
- 额定脉冲电压 Rated impulse voltage	8kV
- 污染程度 Pollution degree	3
依据 UL/CSA 额定电压 Rated voltage	600V
绝缘电阻 Insulation resistance	$\geq 10^{10}\Omega$
材料 Material	聚碳酸酯 Polycarbonate
工作温度范围 Limiting temperatures	-40°C ...+125°C
依据 UL94 阻燃等级 Flammability	V0
可拔插次数 Mating cycles	≥ 500

2 插针 Contacts

材料 Material	铜合金 Copper alloy
表面处理 Surface	镀银 Hard-silver plated
轴向螺栓连接 Axial screw terminal	
-mm ²	2.5-10 mm ²
-AWG	14-8
- 内六角扳手 Hexagonal driver	SW 2
- 剥线长度 Stripping length	
-mm ²	2.5 4 6 10
-AWG	5 ⁻¹ 5 ⁺¹ 8 ⁻¹ 11 ⁺¹
- 拧紧力矩 Tightening torque	
-mm ²	2.5 4 6 10
-AWG	1.5 1.5 2 2
接触电阻 Contact resistance	$\leq 0.5\text{m}\Omega$
冷压连接 Crimp terminal	
-mm ²	1.5-10 mm ²
-AWG	16-8
接触电阻 Contact resistance	$\leq 0.3\text{m}\Omega$

HM-003 模块连接器 MODULAR CONNECTORS

额定电流 Rated current: 40A 额定电压 Rated voltage: 690V

接线方式: 冷压针压接 Termination methods: Crimp terminal (冷压针请单独订购 Order crimp contacts separately)	型号 Type	订货号 Part No.		尺寸图 Drawing (mm)	
		公接插针 Male insert	母接插针 Female insert		
 M F	HM-003-M	5140033001		M	
	HM-003-F		5140033101	F	

40A 插针 Contacts

技术参数 Technical data

材质: 铜镀银 / 金

Material: Copper, hard silver / gold plated

接触电阻 Contact resistance: $\leq 4\text{m}\Omega$

接线形式: 冷压接线

Termination methods: Crimp connection

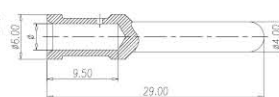
CMM



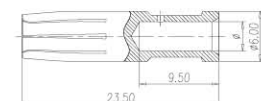
CMF



40A 公插针 Male



40A 母插针 Female



接线长度 (mm) Stripping length			镀银冷压针 Crimp contacts, silver-plated	
	型号 Type	订货号 Part No.		
1.5	AWG16	8.0mm	CMM-1.5	3320006104
2.5	AWG14	8.0mm	CMM-2.5	3320006105
4.0	AWG12	8.0mm	CMM-4.0	3320006107
6.0	AWG10	8.0mm	CMM-6.0	3320006108
10.0	AWG7	8.0mm	CMM-10	3320006109

接线长度 (mm) Stripping length			镀银冷压针 Crimp contacts, silver-plated	
	型号 Type	订货号 Part No.		
1.5	AWG16	8.0mm	CMF-1.5	3320006204
2.5	AWG14	8.0mm	CMF-2.5	3320006205
4.0	AWG12	8.0mm	CMF-4.0	3320006207
6.0	AWG10	8.0mm	CMF-6.0	3320006208
10.0	AWG7	8.0mm	CMF-10	3320006209

技术参数 Technical characteristics

1 插芯 Inserts

接插件针数 Inserts Number of contacts	3
依据 DIN EN 61984 的电气数据 Electrical data	
电缆直径 Insulation diameter up to	7.5mm
- 额定电流 Rated current	40A
- 额定电压 Rated voltage	500V
- 额定脉冲电压 Rated impulse voltage	6kV
- 污染程度 Pollution degree	3
依据 UL/CSA 的额定电压 Rated voltage	600V
依据 UL/CSA 的额定电流 Rated current	32A
绝缘电阻 Insulation resistance	$\geq 10^{10}\Omega$
材料 Material	聚碳酸酯 Polycarbonate
工作温度范围 Limiting temperatures	-40°C ... +125°C
依据 UL94 阻燃等级 Flammability	V0
可接插次数 Mating cycles	≥ 500

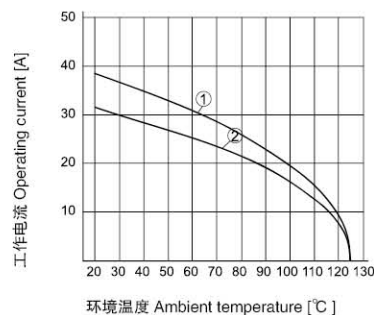
2 插针 Contacts

材料 Material	铜合金 Copper alloy
表面处理 Surface	镀银 Hard-silver plated
接触电阻 Contact resistance	$\leq 0.3\text{m}\Omega$
冷压连接 Crimp terminal	
- mm ²	1.5-10 mm ²
- AWG	16-8

电流负载能力 Current carrying capacity

电流负载能力所受的限制主要来自包含接插针的接插体可承受的最大温度测试和控制过程依据 DIN EN 60512-5

Current load capacity, mainly from the restrictions include plug the plug of the needle body can withstand maximum temperature Testing and control process according to DIN EN 60512-5


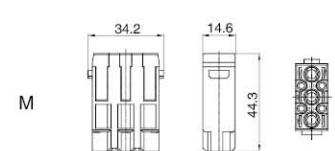
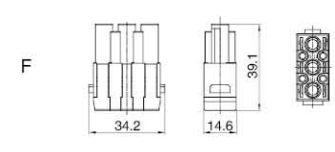


① 24B 外壳 带 6 个模块, 导线截面 Wire gauge: 6 mm²

② 24B 外壳 带 6 个模块, 导线截面 Wire gauge: 4 mm²

HM-3/4 模块连接器 MODULAR CONNECTORS

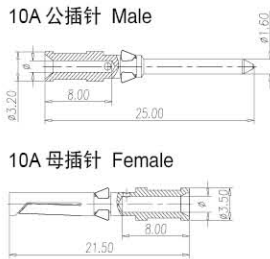
额定电流 Rated current: 40 A / 10A 额定电压 Rated voltage: 400 V / 250V

接线方式: 冷压针压接 Termination methods: Crimp terminal (冷压针请单独订购 Order crimp contacts separately)	型号 Type	订货号 Part No.		尺寸图 Drawing (mm)
		公接插针 Male insert	母接插针 Female insert	
 M F	HM-3/4-M	5140073001		
	HM-3/4-F		5140073101	

10A 镀银冷压针 Crimp contacts, silver-plated

技术参数 Technical data

材质: 铜镀银 / 金
Material: Copper, hard silver / gold plated
接触电阻 Contact resistance: $\leq 3\text{m}\Omega$
接线形式: 冷压接线
Termination methods: Crimp connection

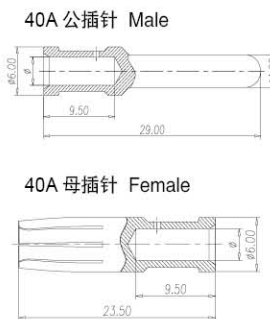


线径 (mm ²) Wire gauge	接线长度 Stripping length	公接插针 Male insert 型号 Type	公接插针 Male insert 订货号 Part No.	母接插针 Female insert 型号 Type	母接插针 Female insert 订货号 Part No.	
0.14-0.37	AWG26-22	8.0mm	CDM-0.37	3150006104	CDF-0.37	3150006204
0.5	AWG20	8.0mm	CDM-0.5	3150006103	CDF-0.5	3150006203
0.75	AWG18	8.0mm	CDM-0.75	3150006105	CDF-0.75	3150006205
1.0	AWG18	8.0mm	CDM-1.0	3150006102	CDF-1.0	3150006202
1.5	AWG16	8.0mm	CDM-1.5	3150006101	CDF-1.5	3150006201
2.5	AWG14	8.0mm	CDM-2.5	3150006106	CDF-2.5	3150006206

40A 插针 Contacts

技术参数 Technical data

材质: 铜镀银 / 金
Material: Copper, hard silver / gold plated
接触电阻 Contact resistance: $\leq 4\text{m}\Omega$
接线形式: 冷压接线
Termination methods: Crimp connection



线径 (mm ²) Wire gauge	接线长度 (mm) Stripping length	镀银冷压针 Crimp contacts, silver-plated	
		型号 Type	订货号 Part No.
1.5	AWG16	CMM-1.5	3320006104
2.5	AWG14	CMM-2.5	3320006105
4.0	AWG12	CMM-4.0	3320006107
6.0	AWG10	CMM-6.0	3320006108
10.0	AWG7	CMM-10	3320006109

线径 (mm ²) Wire gauge	接线长度 (mm) Stripping length	镀银冷压针 Crimp contacts, silver-plated	
		型号 Type	订货号 Part No.
1.5	AWG16	CMF-1.5	3320006204
2.5	AWG14	CMF-2.5	3320006205
4.0	AWG12	CMF-4.0	3320006207
6.0	AWG10	CMF-6.0	3320006208
10.0	AWG7	CMF-10	3320006209

技术参数 Technical characteristics

1 插芯 Inserts

插接件针数 Inserts/Number of contacts	3/4
依据 DIN EN 61984 的电气数据 Electrical data	
电源区 Power area	
- 额定电流 Rated current	40A
- 额定电压 Rated voltage	830V
- 额定脉冲电压 Rated impulse voltage	8kV
- 污染程度 Pollution degree	3
信号区 Signal area	
- 额定电流 Rated current	10A
- 额定电压 Rated voltage	830V
- 额定脉冲电压 Rated impulse voltage	8kV
- 污染程度 Pollution degree	3
依据 UL/CSA 额定电压 Rated voltage	600V
绝缘电阻 Insulation resistance	$\geq 10^{10}\Omega$
材料 Material	聚碳酸酯 Polycarbonate
工作温度范围 Limiting temperatures	-40°C ... +125°C
阻燃等级 Flammability	V0
可接插次数 Mating cycles	≥ 500


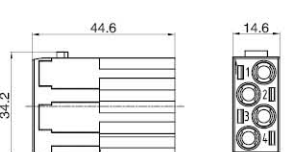
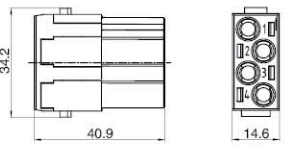
2 插针 Contacts

材料 Material	铜合金 Copper alloy
表面处理 Surface	镀银 Hard-silver plated
接线形式 Termination methods	螺丝连接 Screw terminal
接触电阻 Contact resistance	
- 电源针 Power contacts	$\leq 0.3\text{m}\Omega$
- 信号针 Signal contacts	$\leq 3\text{m}\Omega$
冷压连接 Crimp terminal	
-mm ²	
- 电源针 Power contacts	1.5-6 mm ²
- 信号针 Signal contacts	0.14-2.5 mm ²
-AWG	
- 电源针 Power contacts	16-10
- 信号针 Signal contacts	26-14
最大电缆直径: 电源针 Power contacts	5mm

HM-004 模块连接器 MODULAR CONNECTORS



额定电流 Rated current: 40A 额定电压 Rated voltage: 830V

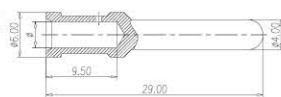
接线方式: 冷压针压接 Termination methods: Crimp terminal (冷压针请单独订购 Order crimp contacts separately)	型号 Type	订货号 Part No.		尺寸图 Drawing (mm)	
		公接插针 Male insert	母接插针 Female insert		
 M F	HM-004-M	5140043041		M	
	HM-004-F		5140043141	F	

40A 插针 Contacts

技术参数 Technical data

材质: 铜镀银 / 金
Material: Copper, hard silver / gold plated
接触电阻 Contact resistance: $\leq 4m\Omega$
接线形式: 冷压接线
Termination methods: Crimp connection

40A 公插针 Male

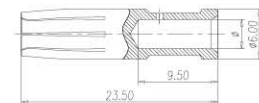


线径 (mm ²) Wire gauge	接线长度 (mm) Stripping length	镀银冷压针 Crimp contacts, silver-plated	
		型号 Type	订货号 Part No.
1.5	AWG16	CMM-1.5	3320006104
2.5	AWG14	CMM-2.5	3320006105
4.0	AWG12	CMM-4.0	3320006107
6.0	AWG10	CMM-6.0	3320006108
10.0	AWG7	CMM-10	3320006109

CMM



40A 母插针 Female



线径 (mm ²) Wire gauge	接线长度 (mm) Stripping length	镀银冷压针 Crimp contacts, silver-plated	
		型号 Type	订货号 Part No.
1.5	AWG16	CMF-1.5	3320006204
2.5	AWG14	CMF-2.5	3320006205
4.0	AWG12	CMF-4.0	3320006207
6.0	AWG10	CMF-6.0	3320006208
10.0	AWG7	CMF-10	3320006209

CMF



技术参数 Technical characteristics

1 插芯 Inserts

接插件针数 Inserts Number of contacts	4
依据 DIN EN 61984 的电气数据 Electrical data	
- 额定电流 Rated current	40A
- 额定电压 Rated voltage	830V
- 额定脉冲电压 Rated impulse voltage	8kV
- 污染程度 Pollution degree	3
依据 UL 的额定电压 Rated voltage	600V
绝缘电阻 Insulation resistance	$\geq 10^{10}\Omega$
材料 Material	聚碳酸酯 Polycarbonate
工作温度范围 Limiting temperatures	-40°C ... +125°C
依据 UL94 阻燃等级 Flammability	V0
可接插次数 Mating cycles	≥ 500

2 插针 Contacts

材料 Material	铜合金 Copper alloy
表面处理 Surface	镀银 Hard-silver plated
接触电阻 Contact resistance	$\leq 0.3m\Omega$
冷压连接 Crimp terminal	
- mm ²	1.5-6 mm ²
- AWG	16-10

